

## **Historic, Archive Document**

Do not assume content reflects current scientific knowledge, policies, or practices.



62.39

Field Investigations in Pomology

RECEIVED

SEP 30 1911

Fall, 1911 **CATALOG** Spring, 1912

# Kelsey's Rhododendrons Azaleas and other Hardy Native American Plants

Grown in the Carolina Mountains, at 3,800 feet elevation

**HIGHLANDS NURSERY, Saginaw, N. C.**

AND

**SALEM NURSERIES, Salem, Mass.**



Grandfather Mountain, 5,978 feet elevation. On its slopes is located Highlands Nursery. Winter temperature as low as 20° Fahr., producing the hardiest stock known.

## TERMS

**TERMS** cash or satisfactory references from unknown parties. Accounts due first of each month, unless by special arrangement. 5 at 10 rates; 50 at 100 rates; 500 at 1,000 rates.

**AN EXTRA CHARGE** is always made for special selection.

**PACKING** free.

**SEND FOREIGN REMITTANCES** by Postal Money Order, drawn on Salem, Mass., postoffice; or by New York or Boston Exchange. An American dollar equals 4 shillings, 4 marks, or 5 francs.

**CLAIMS** must be made on receipt of goods. If there is any mistake or fault on our part, it will be gladly rectified. All shipments travel at consignee's risk, and transportation companies must be held liable for damage in transit.

✉ Always address,

**HARLAN P. KELSEY, Owner**

Cable Address  
**KELMONT - SALEM**

**SALEM, MASS., U. S. A.**

## Information

**HIGHLANDS NURSERY SHIPMENTS** are made from Pineola, N. C., freight station, and prices in this list are made on this basis. Freight and express rates gladly quoted. Via Norfolk Steamship Lines, deliveries to northern and eastern points are quick and rates low.

**SALEM NURSERIES SHIPMENTS** are made from Salem direct, and Salem price-list must be used in ordering. Prices are about 25 per cent. higher than for similar stock at our main Highlands Nursery. A fine stock of specimen Rhododendrons, Azaleas, Conifers, etc., may be seen at Salem Nurseries, and deliveries to eastern points rarely take more than a day or two.

**SHIPMENTS OF "COLLECTED" RHODODENDRON MAXIMUM AND KALMIAS** are from our special fields in Pennsylvania and the South, depending on destination and quality of stock desired. The best clumps come from the South from high altitudes.

**"COLLECTED" RHODODENDRON CATAWBIENSE AND RHODODENDRON PUNCTATUM** come only from the South.

**OUR NURSERIES ARE UNIQUE**, being the first and only to grow Native American Ornamentals, and we now have the only large and complete stock of Hardy American plants in existence.

**THE LOCATION OF HIGHLANDS NURSERY** also is unique, an elevation of 3,800 feet insuring unquestioned hardiness.

**SHIPPING BEGINS IN SEPTEMBER**, when we send out large Rhododendrons, Kalmias and other evergreens, and bulbs and herbaceous plants, general stock going out in October and November and in spring from about March 1 to May 15. Give shipping instructions, unless you wish to leave it to us. We use our best judgment, but assume no risk.

**OUR EXPORT SHIPMENTS** reach the most remote countries, in perfect condition; we have exported for over 25 years and know how to pack.

**A DESCRIPTIVE CATALOG**, beautifully illustrated, is gladly mailed on request, and advice on the right way to grow Rhododendrons, Azaleas and other native plants gladly given.

## HARLAN P. KELSEY, Owner

Cable Address  
KELMONT-SALEM

SALEM, MASS.

---

## Where Kelsey's Hardy American Plants Are Grown.

**HIGHLANDS NURSERY**, under ideal natural conditions at 3,800 feet elevation in the southern Alleghanies, produces absolutely hardy stock for latitudes as far north as Ottawa, Canada.

**SALEM NURSERIES** carry specimen plants, and are a distributing point for New England.

**SPECIALTIES**: Rhododendrons, Azaleas, Kalmias, Leucothoes, Galax, Rare Ericaceæ Lilies, Trilliums, and the largest general collection of Hardy Native American Plants in existence. Carload shipments for mass planting.

**LANDSCAPE DEPARTMENT**. Planting plans made and executed. Wild gardens, woodland "under" planting, bog and water gardens, rockeries. Broad-leaved Evergreen effects. Formal gardens. Send for Catalogs.

---

September and October is the time to successfully ship and plant Lilies, Trilliums, Cyripediums, Erythroniums and other Bulbs and many Herbaceous Plants.

# KELSEY'S Hardy American Plants Rhododendrons and Azaleas

Catalog of Highlands Nursery

## Trees, Shrubs and Vines

### DECIDUOUS AND EVERGREENS

NOTE—Cl. Denotes Clumps; S., Seedlings; Col., Collected. All plants are transplanted and nursery-grown unless plainly marked otherwise

**Bear in mind** this is a catalog of **Nursery-grown plants** growing at my Highlands Nursery, Saginaw, North Carolina, where I have 100 acres in Nursery. For Salem Nurseries Price-list, see pages 21 to 24.



*Abies fraseri*, specimen on grounds of Highlands Nursery

	Per 10	100	1,000
* <i>Abies balsamea</i> . 1 to 2 ft.....	\$1 50		
2 to 3 ft.....	2 50		
* <i>concolor</i> . 1 to 1½ ft.....	3 00	\$25 00	
* <i>douglasii</i> . See <i>Pseudotsuga</i> .			
<b>FRASERI</b> . One of the finest American Firs. Native of the highest peaks of the Southern Alleghanies.			
6 to 12 in.....	75	6 00	\$50 00
1 to 1½ ft.....	1 25	10 00	80 00
1½ to 2 ft.....	2 00	18 00	
<b>Acer pennsylvanicum</b> . 2 to 3 ft.....	1 50	12 50	
3 to 4 ft.....	2 00		
4 to 6 ft.....	3 00	25 00	
<b>rubrum</b> . 2 to 3 ft.....	1 25		
3 to 4 ft.....	2 00		
<b>SACCHARUM</b> . Sugar Maple. 20,000 young plants growing at Highlands Nursery.			
6 to 12 in.....	25	2 00	15 00
1 to 2 ft.....	50	4 00	25 00
2 to 3 ft.....	65	5 00	40 00
3 to 4 ft.....	80	7 00	60 00
4 to 6 ft.....	1 25	10 00	
<b>spicatum</b> . 6 to 12 in.....	75	6 00	
1 to 2 ft.....	1 00	8 00	
2 to 3 ft.....	2 00		
<b>Adelia acuminata</b> . 1 to 2 ft.....	3 00		
2 to 3 ft.....	4 00		
3 to 4 ft.....	6 00		

EVERGREENS ARE MARKED WITH A STAR (\*)

# KELSEY'S Hardy American Plants Rhododendrons and Azaleas

Catalog of Highlands Nursery



Andromeda (Pieris) floribunda

## TREES, SHRUBS AND VINES, continued

	Per 10	100	1,000
<b>Æsculus octandra.</b> 1 to 2 ft. ....	\$0 50	\$4 00	
2 to 3 ft. ....	1 00	8 00	
3 to 4 ft. ....	1 50	12 00	
4 to 5 ft. ....	2 00		
<b>Alnus alnobetula.</b> 3 to 4 ft., clumps. ....	1 50		
4 to 6 ft., clumps. ....	3 00	20 00	
6 to 8 ft., clumps. ....	5 00		
<b>rugosa.</b> 4 to 6 ft. ....	2 50		
<b>Amelanchier botryapium.</b> 1 to 2 ft. ....	1 00	8 00	
2 to 3 ft. ....	1 25	10 00	
3 to 4 ft. ....	2 00	18 00	
4 to 6 ft. ....	3 00	25 00	
<b>AMPELOPSIS (Parthenocissus) ENGEL-</b>			
<b>MANII.</b> A much finer form than the com-			
mon Virginia creeper, strong. ....	1 25	10 00	
1 yr. ....	75	5 00	\$40 00
<b>vitacea.</b> 1 to 2 ft. ....	2 50		
<b>Andromeda (Pieris) arborea.</b> See <b>Oxydendrum.</b>			
<b>catesbaei.</b> See <b>Leucothoe.</b>			

### \*ANDROMEDA FLORIBUNDA.

Mountain Andromeda. 2 to 4 ft. Compact bush, with shining green leaves and abundant racemes of showy white flowers in May. Without doubt, the choicest of all this section of the Andromeda family. I have over 5,000 bushy plants and clumps on hand at both Nurseries, all with balls, and budded.

Per 10 100  
6 to 12 in., cls. \$10 00 \$80 00  
1 to 1½ ft., cls. 15 00 130 00

**ligustrina.** See **Xolisma.**

**mariana.** 1 to 2 Per 10 100  
ft., clumps. .... \$3 00 \$25 00

**polifolia.** 6 to 12 in. 2 00 15 00

**Aralia spinosa.** 1 to  
2 ft. .... 1 50

**Aristolochia siph.**

6 to 12 in. .... 1 25 10 00  
1 to 2 ft. .... 1 50 12 50

**ARONIA (Pyrus).** The Aronias are not surpassed by any undershrub for finished and permanent effect. Glossy foliage, brilliant fruit and graceful growth. **Arbutifolia** has bright scarlet fruit, **nigra** shiny black fruit. Per 10 100

**ARBUTIFOLIA.**  
6 to 12 in. .... \$1 25 \$10 00  
1 to 2 ft. .... 1 75 15 00  
2 to 3 ft. .... 2 50 22 00  
3 to 4 ft. .... 3 50 30 00



Black shiny fruit of Aronia nigra (see p. 5)

# KELSEY'S Hardy American Plants Rhododendrons and Azaleas

Catalog of Highlands Nursery

## TREES, SHRUBS AND VINES, continued

	Per 10	100	1,000
<b>Aronia erythrocarpa.</b> Dwarf species 1 to 2 ft..	\$2 00	\$18 00	
2 to 3 ft.....	3 00	25 00	
<b>erythrocarpa.</b> Tall species, 1 to 2 ft.....	2 50		
<b>melanocarpa.</b> 1 to 2 ft.....	2 50		
2 to 3 ft.....	3 50		
<b>nigra.</b> 6 to 12 in.....	1 00	8 00	
1 to 2 ft.....	1 25	10 00	\$80 00
2 to 3 ft.....	2 00	18 00	

## HARDY AMERICAN AZALEAS

American Azaleas are among the choicest ornamentals, whether exotic or native, and were but rarely seen in cultivation before being disseminated by Highlands Nursery.

They are seen at their best when planted in large masses and in properly prepared beds, and they richly repay any unusual care given them. Like most ericaceous plants, they love deep, moist, well-drained soil, and these showy native species are particularly adapted to planting in shrub borders and with Rhododendrons, their brilliant blossoms being set off by a background of dark foliage. Azaleas can be successfully grown almost anywhere, following same instructions given for Rhododendrons. The complete hardiness of all the species we offer is unquestionable. No American shrubs equal the native Azaleas, particularly *A. lutea*, for woodlands and hillsides.

Our cold Carolina mountains have added no more beautiful plants to gardens than these American Azaleas, not even excepting the magnificent broad-leaved evergreen Rhododendrons. My stock of Azaleas, especially *A. arborescens* and *A. lutea* is unequalled. Usually all sizes over 1 ft. are budded, and special attention is called to the larger-sized clumps, which are very heavy and a mass of buds. These are very desirable for immediate and permanent effect. Such specimen stock has never been offered before.

For prices of Specimen Azaleas at Salem Nurseries, see page 22.



*Azalea canescens*

**AZALEA ARBORESCENS.** Fragrant White Azalea. In June the delightfully spicy fragrant white flowers, with pink stamens, appear in profusion, lasting for weeks. Becomes a spreading clump 3 to 6 feet broad in cultivation; easy culture. The foliage often colors striking shades of red in late autumn.

	Per 10	100
6 to 12 in.....	\$2 00	\$18 00
1 to 1½ ft.....	3 50	30 00
6 to 12 in., clumps.....	6 00	50 00
1½ to 2 ft.....	4 00	35 00
1 to 1½ ft., clumps.....	8 00	70 00
1½ to 2 ft., clumps.....	15 00	130 00
2 to 3 ft., clumps.....	30 00	260 00
3 to 4 ft., clumps.....	50 00	
<b>canescens.</b> 1 to 1½ ft.....	3 50	
1 to 1½ ft., clumps.....	5 00	

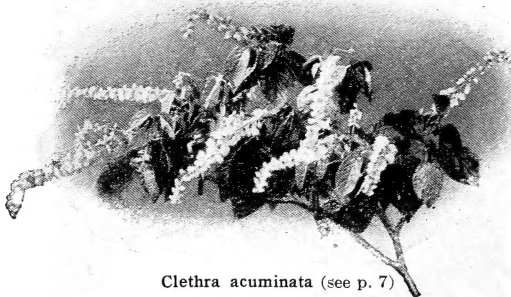
EVERGREENS ARE MARKED WITH A STAR (\*)

# KELSEY'S Hardy American Plants Rhododendrons and Azaleas

Catalog of Highlands Nursery

## TREES, SHRUBS AND VINES, continued

<b>AZALEA LUTEA</b> (Calendulacea). Great		Per 10	100	1,000
Flame-colored Azalea.				
6 to 12 in.		\$1 50	\$12 00	\$100 00
1 to 1½ ft.		2 50	20 00	175 00
1½ to 2 ft.		3 00	26 00	225 00
2 to 3 ft.		6 00	45 00	400 00
6 to 12 in., clumps		2 75	22 00	200 00
1 to 1½ ft., clumps		4 00	30 00	275 00
1½ to 2 ft., clumps		6 50	55 00	
2 to 3 ft., clumps		10 00	80 00	
3 to 4 ft., clumps		25 00	200 00	
4 to 5 ft., clumps		60 00		
<b>AZALEA NUDIFLORA.</b> Pinxter Flower				
6 to 12 in.		1 50	12 00	100 00
1 to 1½ ft.		2 50	20 00	175 00
6 to 12 in., clumps		2 75	22 00	
1 to 1½ ft., clumps		4 00	30 00	
<b>AZALEA VASEYI.</b> Southern Azalea. April and May. This showy Azalea was discovered in 1878 and introduced by Highlands Nursery very soon after. The most profuse bloomer of all the native species. Flowers pink or deep rose-colored. Foliage deep crimson in autumn. See color illustration on back cover.				
		Per 10	100	1,000
6 to 12 in.		\$2 50	\$22 00	
1 to 1½ ft.		3 50	30 00	\$275 00
1½ to 2 ft.		6 00	55 00	
6 to 12 in., clumps		5 00	45 00	
1 to 1½ ft., clumps		7 00	60 00	
1½ to 2 ft., clumps		12 50		



Clethra acuminata (see p. 7)

<b>AZALEA VISCOSA.</b> 6 to 12 in.		Per 10	100	1,000
1 to 1½ ft.		\$1 25	\$10 00	
1½ to 2 ft.		1 75	15 00	\$130 00
1 to 1½ ft., clumps		4 00	30 00	
<b>Benzoin (Lindera) benzoin.</b> 2 to 3 ft.		4 50	35 00	300 00
3 to 4 ft.		2 00	18 00	
<b>Berberis repens.</b> 3 to 6 in.		3 00	25 00	
<b>thunbergii</b> 6 to 12 in.		4 00	35 00	
1 to 2 ft.		60	5 00	40 00
2 to 3 ft.		1 25	10 00	
<b>vulgaris.</b> 6 to 12 in.		2 00	18 00	
1 to 2 ft.		60	5 00	40 00
<b>Betula lenta.</b> 3 to 4 ft.		1 00	8 00	
4 to 6 ft.		1 00	8 00	
6 to 8 ft.		2 00	18 00	
8 to 10 ft.		3 00		
<b>lutea.</b> 3 to 4 ft.		5 00		
4 to 6 ft.		1 00	8 00	
4 to 6 ft.		2 00	18 00	
6 to 8 ft.		3 00	25 00	
8 to 10 ft.		5 00	40 00	
<b>papyrifera.</b> 3 to 4 ft.		1 75		
4 to 6 ft.		2 00	18 00	
6 to 8 ft.		4 00		
<b>Butneria (Calycanthus) fertilis.</b> 6 to 12 in.		75		
1 to 2 ft.		1 00		
2 to 3 ft., clumps		2 50		
<b>floridus.</b> 1 to 2 ft.		75	6 00	
2 to 3 ft.		1 25	10 00	80 00
3 to 4 ft., clumps		3 00		
<b>*Bignonia crucigera.</b> 6 to 12 in.		1 00	8 00	70 00
<b>CARPINUS CAROLINIANA.</b> 2 to 3 ft.		1 00	8 00	
3 to 4 ft.		1 50	12 00	
4 to 6 ft.		2 00	18 00	
6 to 8 ft.		3 00	25 00	
<b>CASTANEA PUMILA.</b> Chinkapin. A delicious hardy nut and a fine undershrub				
6 to 12 in.		1 75	15 00	
1 to 2 ft.		2 50	22 00	200 00
<b>Ceanothus americanus.</b> 6 to 12 in.		1 00		
1 to 1½ ft.		1 50		

EVERGREENS ARE MARKED WITH A STAR (\*)

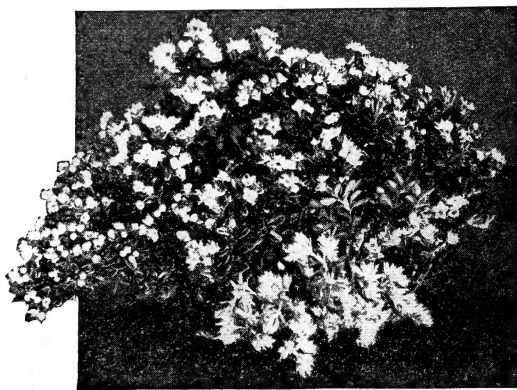


# KELSEY'S Hardy American Plants Rhododendrons and Azaleas

Catalog of Highlands Nursery

## TREES, SHRUBS AND VINES, continued

	Per 10	100
<i>Celastrus punctata</i> . 6 to 12 in.....	\$0 75	\$6 00
1 to 2 ft.....	1 00	8 00
<i>scandens</i> . 6 to 12 in.....	1 00	8 00
<i>Cephalanthus occidentalis</i> . 1 to 2 ft.....	1 25	10 00
2 to 3 ft.....	1 75	15 00
3 to 4 ft.....	2 50	
<i>Cercis canadensis</i> . 1 to 2 ft.....	1 00	8 00
2 to 3 ft.....	1 50	
* <i>Chamædaphne calyculata</i> . 6 to 12 in.....	1 50	12 00
1 to 1½ ft.....	2 00	18 00
1½ to 2 ft.....	2 50	22 00
* <i>Chamæcyparis sphæroidea</i> . 1 to 2 ft.....	2 00	
2 to 3 ft.....	3 00	
<i>Chionanthus virginica</i> . White Fringe.....		
1 to 2 ft.....	1 75	15 00
2 to 3 ft.....	2 50	22 00
3 to 4 ft.....	3 50	
4 to 6 ft.....	5 00	
<i>Clethra acuminata</i> . Southern Pepper Bush. 8 to 20 ft. Tall shrub, with handsome reddish bark and drooping racemes of white flowers. Moist situations or shrubbery. A characteristic Carolina mountain plant. July and August.	Per 10	100
2 to 3 ft.....	\$1 50	\$12 00
3 to 4 ft.....	2 50	22 00
4 to 6 ft.....	3 50	30 00
<i>alnifolia</i> . 6 to 12 in.....	1 00	8 00
1 to 2 ft.....	2 00	18 00
1 to 2 ft., clumps.....	4 00	30 00



*Dendrium prostratum*

	Per 10	100	1,000
<i>Cliftonia ligustrina</i> . 1 to 1½ ft.....	\$8 00		
<i>Comptonia peregrina</i> . 6 to 12 in.....	1 00	\$8 00	
1 to 2 ft.....	1 50	12 00	
<i>Cornus alternifolia</i> . 1 to 2 ft.....	1 00		
<i>amonum</i> . 3 to 4 ft.....	1 25	10 00	
4 to 5 ft.....	2 00	18 00	
<i>florida</i> . 1 to 2 ft.....	1 50	12 00	
<i>siberica</i> . 2 to 3 ft.....	1 50		
3 to 4 ft.....	2 00		
<i>Cornus stolonifera</i> . 1 to 2 ft.....	1 00		
2 to 3 ft.....	1 50		
<i>Corylus americana</i> . 6 to 12 in.....	75	5 00	
1 to 2 ft.....	1 50	12 00	
1 to 2 ft., clumps.....	2 50	20 00	
<i>rostrata</i> . 6 to 12 in.....	75	6 00	
1 to 2 ft.....	1 00	8 00	
<i>Crataegus coccinea</i> . 1 to 2 ft.....	1 25	10 00	
2 to 3 ft.....	1 75	15 00	
<i>crus-galli</i> . 1 to 2 ft.....	1 25	10 00	
2 to 3 ft.....	1 75		
<i>punctata</i> . 6 to 12 in.....	75	6 00	\$50 00
1 to 2 ft.....	1 00	8 00	
2 to 3 ft.....	1 50	12 00	
3 to 4 ft.....	2 00	18 00	
<i>rivularis</i> . 6 to 12 in.....	3 00		
<i>Decodon verticillatus</i> . 6 to 12 in.....	2 00		
* <b>DENDRIUM BUXIFOLIUM</b> . 6 to 9 in.....	1 00	8 00	
9 to 18 in.....	1 50		
* <b>PROSTRATUM</b> . Mountain Heath. 6 to 12 in. The Carolina Mountain prostrate form of this beautiful genus. Rockwork ever- green, closely covering the surface with a bed of green. In full bloom, May or June, produces a striking effect. The delicate flowers tinged with pink.	Per 10	100	
3 to 6 in., clumps.....	\$2 00	\$18 00	
6 to 9 in., clumps.....	3 00	25 00	

EVERGREENS ARE MARKED WITH A STAR (\*)

# KELSEY'S Hardy American Plants Rhododendrons and Azaleas

Catalog of Highlands Nursery

## TREES, SHRUBS AND VINES, continued

	Per 10	100	1,000
<i>Diervilla diervilla</i> . 6 to 12 in.....	\$1 25	\$10 00	
<i>rivularis</i> . 1 to 2 ft.....	3 00		
<i>sessilifolia</i> . 6 to 12 in.....	1 50		
1 to 2 ft.....	2 50		
<i>Diospyros virginiana</i> . 6 to 12 in.....	1 25	10 00	
1 to 2 ft.....	1 75	15 00	
<i>Dirca palustris</i> . 6 to 12 in.....	1 25	10 00	
<i>Euonymus americanus</i> . 6 to 12 in.....	1 25	10 00	
1 to 2 ft.....	1 50	12 00	
2 to 3 ft.....	2 00	18 00	
3 to 4 ft.....	3 50	25 00	
<i>Fraxinus americana</i> . 2 to 3 ft.....	1 00	8 00	
3 to 4 ft.....	1 25	10 00	
4 to 6 ft.....	2 00		
6 to 8 ft.....	3 50		
<i>lanceolata</i> . 2 to 4 ft.....	75	5 00	
4 to 6 ft.....	1 75	12 50	
6 to 8 ft.....	3 00		
<i>oregona</i> . 1 to 2 ft.....	2 50		
<i>Gaylussacia resinosa</i> . 1 to 2 ft.....	1 25	10 00	
<i>Gelsemium sempervirens</i> . 6 to 18 in.....	3 00		
<i>Hamamelis virginica</i> . Witch Hazel. 6 to 12 in.	75	5 00	
1 to 2 ft.....	1 25	10 00	
2 to 3 ft.....	1 75	15 00	
3 to 4 ft.....	2 50	20 00	
<i>Hydrangea arborescens</i> . 6 to 12 in.....	1 25	10 00	
1 to 2 ft.....	1 75	15 00	
<i>radiata</i> . 1 to 1½ ft.....	2 00		
* <i>Hypericum aureum</i> . 1 to 2 ft.....	1 25	10 00	
2 to 3 ft.....	2 00	18 00	
3 to 4 ft.....	3 00		
* <i>densiflorum</i> . 1 to 2 ft.....	60	5 00	\$40 00
2 to 3 ft.....	1 00	8 00	
3 to 4 ft.....	1 75	15 00	
* <i>prolificum</i> . 1 to 2 ft.....	1 25		
2 to 3 ft.....	2 50		
* <i>Ilex cassine</i> . 6 to 12 in.....	4 00		
<i>decidua</i> . 6 to 12 in.....	1 00	8 00	
1 to 2 ft.....	1 50	12 50	
2 to 3 ft.....	2 00		
2 to 3 ft. S.....	2 00	15 00	130 00
* <i>glabra</i> . 6 to 12 in.....	1 50	12 50	
1 to 1½ ft.....	2 50		
<b>ILEX MONTICOLA</b> . Mountain Holly. 15 to 25 ft. The largest of the deciduous Hollies, the pistillate plant producing abundant scarlet fruit in symmetrical rows in fall and early winter, suggesting the local name of "Bead Bush."	Per 10	100	1,000
6 to 12 in.....	\$1 00	\$8 00	
1 to 2 ft.....	1 25	10 00	
2 to 3 ft.....	1 75	14 00	
3 to 4 ft.....	3 00		
4 to 6 ft.....	3 00		
* <b>OPACA</b> . American Holly. 6 to 12 in.....	2 00	18 00	\$160 00
1 to 1½ ft.....	2 50	22 00	
1½ to 2 ft.....	4 00	35 00	
2 to 3 ft.....	8 00	70 00	
3 to 4 ft.....	10 00		
<i>verticillata</i> . 1 to 2 ft.....	1 50	12 00	
<i>Ilicioides (Nemopanthes) mucronata</i> .....	1 50		
6 to 12 in.....	1 50		
<i>Itea virginica</i> . 1 to 2 ft.....	1 25	10 00	
* <i>Juniperus communis</i> . 3 to 4 ft.....	4 00		
* <i>prostrata nana</i> . 6 to 12 in.....	2 00	18 00	
1 to 2 ft.....	4 00		
* <i>virginiana</i> . 4 to 6 ft.....	6 00		

## KALMIA

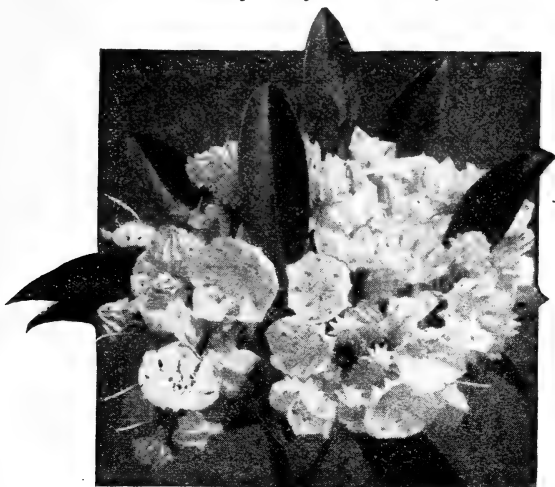
* <b>KALMIA ANGUSTIFOLIA</b> . 6 to 12 in.....	1 25	10 00	80 00
1 to 1½ ft.....	2 50	22 00	
<b>GLAUCA</b> . 6 to 12 in.....	1 50	12 00	

**LATIFOLIA**. Mountain Laurel. One of the grandest of our native, broad-leaved evergreen shrubs, attaining tree-like proportions in our southern mountains. In cultivation it is a broad, thick shrub, and, when in full bloom, of surpassing beauty. The wheel-shaped flowers in close terminal corymbs, pure white to pink, appear in May or June in such profusion as almost to smother the foliage. Its thick, shiny leaves, conspicuous the year round, make it a shrub of greatest value for massing. The hardiness of *Kalmia latifolia* is beyond doubt, it being found sparingly in Nova Scotia and increasingly in abundance through New England and the middle Atlantic states (particularly in the higher altitudes), till the crest of the southern Alleghanies is reached. Here, the true American home of the broad-leaved ericaceæ, perfect conditions of soil and climate are found, producing such a luxuriance of growth as to form veritable jungles of gorgeous beauty, miles in extent. It is found throughout South Carolina, Georgia, and northern Florida, along the banks of streams and cypress swamps. This proves it to be a plant that will stand almost semi-tropical conditions as well as extreme cold. It is therefore extremely valuable for the southern states, taking its place with the magnificent Indian Azaleas, which are not hardy in the North.

EVERGREENS ARE MARKED WITH A STAR (\*)

# KELSEY'S Hardy American Plants Rhododendrons and Azaleas

Catalog of Highlands Nursery



*Kalmia latifolia*

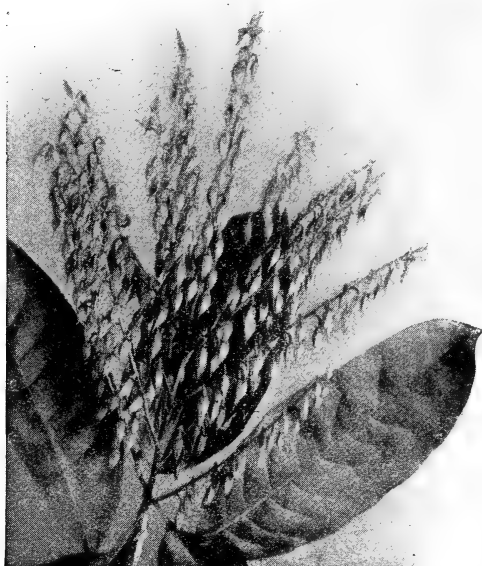
## TREES, SHRUBS AND VINES, continued

<b><i>Kalmia latifolia</i></b>	Per 10	100	1,000
3 to 6 in.....	\$0 50	\$4 00	\$30 00
6 to 9 in.....	1 00	8 00	60 00
9 to 12 in.....	1 50	12 50	100 00
1 to 1½ ft.....	2 00	18 00	160 00
1½ to 2 ft.....	4 00	30 00	265 00
2 to 3 ft.....	6 00	50 00	
6 to 9 in., clumps.....	2 50	22 00	200 00
9 to 12 in., clumps.....	4 50	35 00	300 00
1 to 1½ ft., clumps.....	6 50	60 00	500 00
1½ to 2 ft. clumps.....	10 00	90 00	
2 to 3 ft., clumps.....	25 00	200 00	
<b><i>Larix laricina.</i></b> 6 to 12 in.....	1 25	10 00	
4 to 6 ft.....	4 00		
6 to 8 ft.....	6 00		
<b>*<i>Ledum groenlandicum.</i></b> 3 to 6 in.....	1 25	10 00	
6 to 12 in.....	1 50		
1 to 1½ ft.....	3 00		
<b>*LEUCOTHOE CATESBAEI.</b> 3 to 8 ft. Few shrub evergreens of the broad-leaved sort have the grace of this one. The thick, shining green leaves are evenly disposed on long, recurved branches, dense racemes of beautiful white bell-shaped flowers. As an undershrub or for banks and the borders of streams it is without a rival. The sprays make beautiful winter decorations indoors, turning a rich bronze in the fall where exposed to the sun. Over 40,000 plants in my Nurseries.	Per 10	100	1,000
6 to 12 in.....	\$1 00	\$8 00	\$70 00
1 to 1½ ft.....	1 50	12 50	100 00
1½ to 2 ft.....	2 75	22 00	
6 to 12 in., clumps.....	3 00	25 00	200 00
1 to 1½ ft., clumps.....	4 00	35 00	300 00
1½ to 2 ft., clumps.....	6 00	50 00	
<b>recurva.</b> 6 to 12 in.....	1 00	8 00	
1 to 2 ft.....	1 75	15 00	
<b>racemosa.</b> 1 to 2 ft.....	3 00		
<b>Lonicera dioica.</b> 1 to 2 ft.....	1 00		
2 to 3 ft.....	1 25	10 00	
<b>*japonica var. halliana.</b> light.....	75	5 00	40 00
strong.....	1 00	8 00	
<b>*sempervirens</b> 1 to 2 ft.....	1 75	15 00	
<b>Magnolia acuminata.</b> 6 to 12 in.....	75	5 00	
1 to 2 ft.....	1 00	8 00	
2 to 3 ft.....	1 25		
3 to 4 ft.....	2 00		
<b>fraseri.</b> 1 to 2 ft.....	1 25	10 00	
2 to 3 ft.....	1 75	15 00	
3 to 4 ft.....	3 00	25 00	
4 to 6 ft.....	4 00	35 00	
6 to 8 ft.....	6 00	50 00	
<b>glauca thompsoniana.</b> 6 to 12 in.....	4 00		
<b>tripetala.</b> 1 to 2 ft.....	1 50	12 00	
2 to 3 ft.....	2 00		
3 to 4 ft.....	3 00	25 00	
4 to 6 ft.....	4 00		
6 to 8 ft.....	5 00		
<b>Malus coronaria.</b> Wild Fragrant Crab.			
6 to 12 in.....	1 50	12 50	
1 to 2 ft.....	2 50	20 00	
<b>Menziesia pilosa.</b> 1 to 2 ft.....	2 00	18 00	
2 to 3 ft.....	3 00		

EVERGREENS ARE MARKED WITH A STAR (\*)

# KELSEY'S Hardy American Plants Rhododendrons and Azaleas

Catalog of Highlands Nursery



The beautiful Tree Andromeda, *Oxydendrum arboreum*

## TREES, SHRUBS AND VINES, continued

<b>Mohrodendron (Halesia) carolinum.</b> Silver	Per 10	100	1,000
Bell. 6 to 12 in.....	\$1 00	\$8 00.	
1 to 2 ft.....	1 50		
2 to 3 ft.....	2 50		
<b>diptera.</b> 2 to 3 ft.....	3 00		
<b>Myrica cerifera.</b> 6 to 12 in.....	1 00	8 00	
1 to 1½ ft.....	2 00		
<b>gale.</b> 6 to 12 in.....	1 50	12 00	
1 to 1½ ft.....	2 00	18 00	
<b>Nyssa multiflora.</b> 3 to 6 in. S.....	75	5 00	\$40 00
6 to 12 in.....	2 50	20 00	
1 to 2 ft.....	3 50		
<b>Ostrya virginica.</b> 1 to 2 ft.....	1 25	10 00	
2 to 3 ft.....	2 00	15 00	
3 to 4 ft.....	3 00		
<b>Oxydendrum arboreum.</b> Tree Andromeda. 25 to 50 ft. One of our finest native trees, producing white, fragrant flowers, borne on slender petioles in long, paniced racemes and very graceful foliage that colors brilliantly in early autumn through shades of crimson.	Per 10	100	1,000
6 to 12 in.....	\$1 25	\$10 00	\$80 00
1 to 2 ft.....	1 75	15 00	130 00
2 to 3 ft.....	2 50		
<b>*Picea canadensis.</b> White Spruce. 1 to 2 ft.....	2 00	18 00	
2 to 3 ft.....	3 00	25 00	
3 to 4 ft.....	5 00	40 00	
4 to 5 ft.....	8 00		
<b>douglasii.</b> See <b>Pseudotsuga.</b>			
<b>*engelmanni.</b> 2 to 4 in. S.....	60	4 00	30 00
1 yr. S.....	40	2 00	15 00
<b>*mariana.</b> Black Spruce. 1 to 2 ft.....	1 25	10 00	
2 to 3 ft.....	1 75	15 00	
3 to 4 ft.....	3 00	25 00	
4 to 6 ft.....	6 00		
6 to 7 ft.....	10 00		
<b>*pungens.</b> Blue Spruce. 1 yr. S.....	40	2 00	18 00
1 to 2 ft.....	5 00	40 00	
2 to 3 ft.....	8 00		
<b>*Pinus divaricata.</b> 6 to 12 in.....	1 25	10 00	80 00
1 to 2 ft.....	1 75	15 00	125 00
2 to 3 ft.....	2 50	20 00	150 00
3 to 4 ft.....	4 00	35 00	
<b>*flexilis.</b> 6 to 12 in.....	1 00	8 00	
1 to 2 ft.....	2 00	15 00	
2 to 3 ft.....	3 50		
1 yr. S.....	30	2 00	18 00
<b>*lambertiana.</b> 6 to 12 in.....	4 00		
<b>*mitis.</b> 2 to 3 ft.....	4 00		
3 to 4 ft.....	5 00		
4 to 6 ft.....	6 00		
<b>*ponderosa.</b> 1 yr. S.....	40	3 00	20 00
6 to 12 in.....	2 00	18 00	
1 to 2 ft.....	4 00	30 00	

EVERGREENS ARE MARKED WITH A STAR (\*)

# KELSEY'S Hardy American Plants Rhododendrons and Azaleas

## Catalog of Highlands Nursery

### TREES, SHRUBS AND VINES, continued

	Per 10	100	1,000
<b>*PINUS PUNGENS.</b> 2 to 3 ft.....	\$1 50	\$12 00	
3 to 4 ft.....	2 50	20 00	
4 to 6 ft.....	5 00	40 00	
<b>*rigida.</b> 1 to 2 ft.....	1 50	12 00	
2 to 3 ft.....	2 00	18 00	\$160 00
3 to 4 ft.....	3 00	25 00	200 00
4 to 5 ft.....	6 00	50 00	
<b>*PINUS STROBUS.</b> White Pine. A splendid stock all transplanted, the larger sizes with balls. 6 to 12 in.....	60	5 00	40 00
1 to 2 ft.....	1 75	15 00	
2 to 3 ft.....	2 50	22 00	
3 to 4 ft.....	4 50	40 00	
4 to 6 ft.....	10 00	80 00	
6 to 8 ft.....	20 00	160 00	
<b>Prunus besseyi.</b> 1 to 2 ft.....	3 00		
<b>maritima.</b> 1 to 2 ft.....	1 50	12 00	
2 to 3 ft.....	2 00	18 00	
<b>pumila.</b> 6 to 12 in.....	1 00	8 00	
1 to 2 ft.....	1 50	12 00	
<b>*Pseudotsuga taxifolia.</b> Douglas Spruce.			
3 to 6 in. S.....	60	5 00	40 00
6 to 12 in.....	1 00	8 00	60 00
1 to 2 ft.....	2 00	16 00	
2 to 3 ft.....	3 50		
<b>Quercus alba.</b> 1 to 2 ft.....	1 25	10 00	
2 to 3 ft.....	1 75	15 00	
3 to 4 ft.....	3 00		
<b>bannesteri.</b> 1 to 2 ft.....	4 00		
2 to 3 ft.....	6 00		
<b>cerris.</b> 2 to 3 ft.....	3 00		
3 to 4 ft.....	4 00		
<b>coccinea.</b> 2 to 4 ft.....	2 25	18 00	
4 to 6 ft.....	5 00	40 00	
6 to 8 ft.....	7 00	60 00	
<b>laurifolia.</b> 6 to 12 in.....	5 00		
<b>macrocarpa.</b> 2 to 3 ft.....	3 00		
3 to 4 ft.....	5 00		
4 to 6 ft.....	8 00		
<b>palustris.</b> 6 to 8 ft.....	4 00		
8 to 10 ft.....	8 00		
<b>prinus.</b> 2 to 3 ft.....	3 00		
3 to 4 ft.....	5 00		
4 to 6 ft.....	7 00		
<b>rubra.</b> 2 to 4 ft.....	2 50	15 00	
4 to 6 ft.....	5 00	40 00	
<b>texana.</b> 2 to 3 ft.....	4 00		
3 to 4 ft.....	6 00		

### \*Rhododendron Catawbiense, of the Carolina Mountains

It is this magnificent Rhododendrum that over a hundred years ago was introduced into Europe, supplying, together with *Rhododendron maximum* and *R. punctatum*, color and hardy blood to the cultivated "hybrids," but with a consequent loss of hardiness; and so today, for American gardens where ironclad hardiness is essential, we must turn to the true original species, found on the loftiest, coldest peaks of the southern Alleghanies, where it attains a height of 20 to 30 feet.

Considering the extreme hardiness, color of flower, compact growth and remarkable texture of foliage, which is a deep, shiny green and far superior to the better known *Rhododendron maximum*, we can recommend the true native catawbiense as the finest for general use, withstanding exposure and extremes of temperature where other Rhododendrons fail.

Do not confuse this true species, which is absolutely hardy, with the common so-called catawbiense hybrid seedlings so freely imported from Europe, which is at best half-hardy, and even when branched above is a single stem, showing bareness underneath for years.

Unlike *Rhododendron maximum*, it is a very free bloomer, with foliage of a dark, rich, lasting green, which never rusts. The trusses are a bright red-purple, in marked contrast to the muddy purple of the semi-hardy half-breed imported variety noted above and, as sent out by Highlands Nursery are always on their own roots.

For massing to produce a broad-leaved evergreen landscape effect, there is no plant equal to it in the latitude of the northern United States and Canada, where strictly hardy plants must be employed. As a rich, finished border to plantations of the commoner *Rhododendron maximum* and *Kalmia latifolia*, the value of *Rhododendron catawbiense* cannot be overestimated.

Do not compare our many-stemmed clumps with the single-stemmed, "bushy" half-hardy Rhododendrons offered by importers. There is no comparison.

	Per 10	100	1,000
3 to 6 in.....	\$1 00	\$8 00	\$70 00
6 to 9 in.....	1 50	12 00	100 00
9 to 12 in.....	2 00	18 00	160 00
1 to 1½ ft.....	3 50	30 00	250 00
1½ to 2 ft.....	5 00	40 00	
9 to 18 in., clumps.....	10 00	80 00	700 00
1½ to 2 ft., clumps.....	16 00	135 00	1300 00
2 to 3 ft., clumps.....	25 00	200 00	1750 00
3 to 4 ft., clumps.....	45 00	400 00	
4 to 5 ft., clumps.....	60 00		

EVERGREENS ARE MARKED WITH A STAR (\*)

# KELSEY'S Hardy American Plants Rhododendrons and Azaleas

Catalog of Highlands Nursery

## Rhododendron catawbiense, collected

Each plant "collected" from the open and burlapped. Prices f. o. b. your station, if east of the Mississippi river.

Car containing 200 clumps, 1½ to 3½ ft., for.....	\$280
Car containing 300 clumps, 1½ to 3½ ft., for.....	390
Car containing 400 clumps, 1½ to 3½ ft., for.....	480
Car containing 600 clumps, 1½ to 3½ ft., for.....	650

Other combinations and sizes gladly quoted.

It is the dream of every plant lover to have, some day, a "Rhododendron Bed" and all that this implies. By following instructions given in my Descriptive Catalog you are assured success.

## \*Rhododendron maximum

The Great American Rosebay

Perfectly Hardy in the Latitude of Quebec

**Rhododendron maximum** is, without doubt, the noblest of American broad-leaved shrubs. It is found growing sparingly in New England and New York, more abundantly in the Pennsylvania mountains, but reaching perfection only in the southern Alleghany mountains, where it grows in such luxuriance as to form a striking feature in the mountain landscape. Its large, waxy white or delicately pink flowers appear in large trusses in July, the latest of all the Rhododendrons, greatly enhancing its ornamental value as a broad-leaved evergreen for finished landscape effect.

Not even in Asia do Rhododendrons grow more luxuriantly than in our southern Alleghany mountains, where they attain a height of 30 feet or more. They must be seen in their native avishness of growth and bloom, on the mountain sides or hanging over the dashing ice-cold streams and waterfalls, to be properly appreciated, and a trip to the high Carolina mountains in spring and early summer is a never-to-be-forgotten series of joys to the lover of nature.

In our northern gardens *Rhododendron maximum* (and other species to a small extent) is subject to damaging attacks from the lace-wing fly, particularly in sunny locations. I recommend an emulsion of five to ten pounds whale-oil soap and one to two quarts kerosene to 100 gallons of water, used with a spray pump with fine nozzle.

	Per 10	100	1,000
3 to 6 in.....	\$0 60	\$5 00	\$40 00
6 to 9 in.....	80	7 00	50 00
9 to 12 in.....	1 25	10 00	80 00
1 to 1½ ft.....	2 00	18 00	160 00
1½ to 2 ft.....	4 00	30 00	
1 to 1½ ft., clumps.....	7 00	60 00	500 00
1½ to 2 ft., clumps.....	12 00	100 00	800 00
2 to 2½ ft., clumps.....	15 00	140 00	



Rhododendron punctatum

## Rhododendron maximum

Prices in carload lots, delivered f. o. b. your station, if east of the Mississippi river, each specimen burlapped separately, "collected" from open ground.

Car containing 300 clumps, 1½ to 4 ft., for.....	\$300
Car containing 400 clumps, 1½ to 4 ft., for.....	375
Car containing 600 clumps, 1½ to 4 ft., for.....	500

Other sizes or combinations will be made up to suit customers.

**R. maximum** is pure white, or often with pink or blush tinge.

It is far cheaper to buy my kind at slightly increased price and have plants that will GROW.

## Rhododendron maximum, Extra Specimens

For those wishing perfect specimens I can supply a few cars "collected" of extremely heavy plants. Price on request.

Highlands Nursery grows and ships hundreds of thousands, and is American headquarters for native plants.

EVERGREENS ARE MARKED WITH A STAR (\*)

# KELSEY'S Hardy American Plants Rhododendrons and Azaleas

Catalog of Highlands Nursery

## \*Rhododendron punctatum

The smallest Alleghanian species, though it often attains a height of 15 feet and is wide-spreading. A very graceful shrub, with totally different aspect from the two species preceding. Leaves dark green, usually blunt and narrow, covered with rusty dots below, much smaller than either Maximum or Catawbiense. Flower clusters appear in greatest profusion in June, covering the plant with a rose-colored mantle. Fine for rocky slopes or hillsides, standing exposure unusually well, and invaluable as a single specimen or for massing with the other species.

	Per 10	100
6 to 9 in.....	\$2 00	\$18 00
9 to 12 in.....	3 00	25 00
1 to 1½ ft.....	5 00	45 00
9 to 12 in., clumps.....	10 00	80 00
1 to 1½ ft., clumps.....	12 00	90 00
1½ to 2 ft., clumps.....	20 00	180 00
2 to 3 ft. clumps.....	40 00	

## Hardy Hybrid Rhododendrons

Having had a continued call for the hardier Hybrids, for use in planting with our native species, I have imported the best ones. By growing several seasons in nursery under favorable conditions, I have acclimated them, and this stock is as reliable as can be had.

## Best Plants for the Rhododendron Beds and for Ground Cover

Some of the most successful are *Andromeda polifolia*, *Chamædaphne calyculata*, *Dendrium buxifolium*, *D. prostratum*, *Ilex glabra*, *Leucothoe catesbæi*, *Pieris floribunda*, *Taxus minor*, *Galax aphylla*, *Gaultheria procumbens*, *Houstonia serpyllifolia*, *Mitchella repens*, *Shortia galacifolia*, *Vinca minor*, *V. minor alba*, *Xanthorrhiza apiifolia*, *Lilies*, *Trilliums*, *Erythroniums*, *Ferns*, *Dicentra eximia*, *Iris*, etc.

## Rhododendrons Delivered at Your Station by the Carload

"Collected" and Nursery-grown

For the area covered and effect produced, a "carload" of Rhododendrons is the cheapest landscape proposition offered. I am offering an unusual grade of splendid clumps, each plant a specimen and burlapped separately. Don't accept "cheap" stock, thrown into cars without burlapping and with the fine hair-like rootlets inevitably exposed. You will be disappointed and find it expensive in the end.

### Rhododendron maximum and R. catawbiense

In mixed car, delivered free at any station east of Mississippi river.

Car containing 150 maximum and 150 catawbiense, "collected" as above.

1½ to 4-ft. clumps—a total of 300—for \$400.

Car containing 250 maximum and 250 catawbiense, 1½ to 4-ft. clumps—a total of 500—for \$600.

Twenty-five years' experience growing "American Plants" is at the service of my customers.

### Kalmia latifolia by carload

Each specimen burlapped, and highest class clumps, "collected" from open, delivered free at your station, if east of Mississippi river.

Car, containing 400 clumps, 1 to 3½ ft., for \$375. *Kalmia* may be added to help fill any Rhododendron car at \$1 per clump.

25,000 nursery-grown plants in all sizes. See free Catalog.

At the same cost, nothing approaches our magnificent hardy American Rhododendrons and other Native Broad-leaved Evergreens for splendid foliage and flower effects.

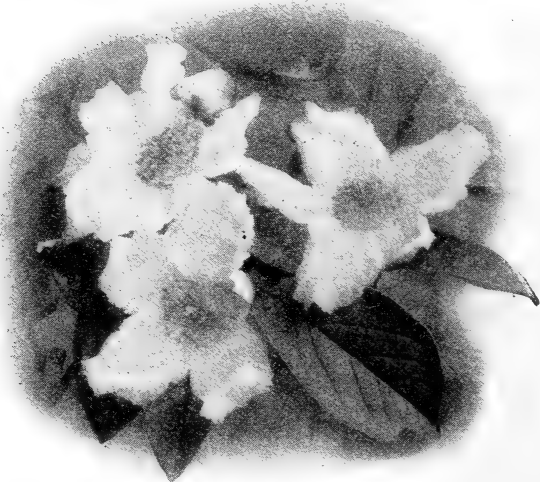
	Per 10	100	1,000
<b>Rhus aromatica.</b> 6 to 12 in.....	\$1 50	\$12 00	\$100 00
1 to 1½ ft.....	2 00	18 00	
<b>copallina.</b> 1 to 2 ft.....	1 50	12 00	
2 to 3 ft.....	2 00	18 00	
<b>Rhodora canadensis.</b> 6 to 12 in.....	3 00		
<b>RHUS COTINOIDES.</b> Southern Smoke Tree. 15 to 30 ft. An invaluable introduction to our list of lawn trees. Very rare, and found only in a few localities in the Alabama and Missouri mountains. While the "smoke" as the fruit is known, is not so conspicuous as the ordinary "Smoke Tree," it is a far finer shrub or small tree, perfectly hardy, with very beautiful, large, glossy leaves. 75 cts. to \$3 each.			
	Per 10	100	
2 to 3 ft.....	\$15 00		
3 to 4 ft.....	20 00		
4 to 6 ft.....	30 00		
6 to 8 ft.....	50 00		
<b>glabra.</b> 1 to 2 ft.....	1 50	\$12 00	
2 to 3 ft.....	2 00		
<b>hirta (typhina).</b> 1 to 2 ft.....	1 25	10 00	
2 to 4 ft.....	1 50	12 50	
4 to 6 ft.....	2 50		
<b>Ribes cynosbati.</b> 1 to 2 ft.....	2 50		
2 to 3 ft.....	3 00		
<b>prostratum.</b> 6 to 12 in.....	1 00		
1 to 2 ft.....	2 00		
<b>rotundifolium.</b> 2 to 3 ft.....	2 00		

# KELSEY'S Hardy American Plants Rhododendrons and Azaleas

Catalog of Highlands Nursery

## TREES, SHRUBS AND VINES, continued

	Per 10	100	1,000
<b>Robinia hispida.</b> 6 to 12 in.....	\$1 00	\$8 00	
1 to 2 ft.....	1 25	10 00	
<b>KELSEYI.</b> 6 to 12 in.....	2 00		
<b>viscosa.</b> 3 to 4 ft.....	2 00		
4 to 6 ft.....	3 00		
<b>Rosa arkansana.</b> 6 to 12 in.....	2 00		
1 to 2 ft.....	3 00		
<b>blanda.</b> 6 to 12 in.....	1 50	12 00	
1 to 2 ft.....	2 00	18 00	
2 to 3 ft.....	3 00	25 00	
<b>carolina.</b> 1 to 2 ft.....	1 00	8 00	\$60 00
2 to 3 ft.....	1 25	10 00	80 00
<b>humilis.</b> 6 to 12 in.....	1 00	8 00	
1 to 2 ft.....	1 50		
<b>lucida.</b> 6 to 12 in.....	1 00	8 00	
1 to 2 ft.....	1 50	12 00	
2 to 3 ft.....	2 00	18 00	
3 to 4 ft.....	2 50		
<b>nitida.</b> 6 to 12 in.....	1 25	10 00	
1 to 1½ ft.....	1 75	15 00	
<b>spinosissima.</b> 6 to 12 in.....	6 00		
<b>woodsii.</b> 6 to 12 in.....	2 50		
<b>Rubus canadensis.</b> 1 to 3 ft.....	75	6 00	
<b>dumetorum.</b> 1 to 2 ft.....	4 00		
<b>deliciosus.</b> 6 to 12 in.....	2 50	20 00	
1 to 2 ft.....	3 50		
<b>*hispidus.</b> Strong.....	75	5 00	40 00
<b>laciniatus.</b> 1 to 3 ft.....	2 50		
<b>odoratus.</b> 6 to 12 in.....	75	5 00	
1 to 2 ft.....	1 00	8 00	
2 to 3 ft.....	1 50		
<b>spectabilis.</b> 6 to 12 in.....	3 00		
<b>Sambucus canadensis.</b> 3 to 4 ft.....	1 50		
<b>pubens.</b> 1 to 2 ft.....	1 50	12 00	
<b>Sassfras officinale.</b> 6 to 12 in.....	1 00	8 00	
1 to 2 ft.....	1 50		
<b>Sorbus (Pyrus) americana.</b> Mountain Ash.			
2 to 3 ft.....	1 25	10 00	
3 to 4 ft.....	2 50	20 00	
4 to 6 ft.....	3 50	30 00	
<b>Spiræa opulus.</b> 1 to 2 ft.....	1 25		
4 to 6 ft.....	3 00		
<b>salicifolia.</b> 2 to 4 ft., clumps.....	2 00	18 00	
<b>tomentosa.</b> 1 to 2 ft.....	1 25	10 00	
<b>tomentosa alba.</b> 6 to 12 in.....	1 00	8 00	
1 to 2 ft.....	1 50	12 00	
<b>STUARTIA PENTAGYNA.</b> Southern Stuartia. 6 to 15 ft. This, the so-called "American Camellia," is one of the most rare and beautiful of all North American shrubs. Erect, well-foliaged and with large, axillary flowers, 3 to 4 inches across, with white creamy petals, deeply crenulated in the margins.			
6 to 12 in.....	Per 10	100	
1 to 2 ft.....	\$1 50	\$12 00	
2 to 3 ft.....	2 50	20 00	
3 to 4 ft.....	4 50	40 00	
4 to 6 ft.....	6 50	55 00	
	15 00		



Stuartia pentagyna the American Camellia



# KELSEY'S Hardy American Plants Rhododendrons and Azaleas

Catalog of Highlands Nursery

## TREES, SHRUBS AND VINES, continued

	Per 10	100	1,000
<b>Styrax japonica.</b> 6 to 12 in.....	2 00	\$18 00	
3 to 4 ft.....	3 00		
4 to 6 ft.....	5 00		
6 to 8 ft.....	8 00		
* <b>Taxus minor.</b> Canadian Yew. 6 to 12 in.....	2 50	20 00	
<b>Tecoma grandiflora.</b> strong.....	3 00		
<b>radicans.</b> 1 to 2 ft.....	1 00		
* <b>Thuja occidentalis.</b> 2 to 3 ft.....	1 50	12 00	
<b>Tilia heterophylla.</b> 3 to 4 ft.....	2 50		
4 to 6 ft.....	3 50		
* <b>TSUGA CANADENSIS.</b> Canadian Hemlock. Over 50,000 fine plants mostly several times transplanted. 6 to 12 in.....	1 00	8 00	\$70 00
1 to 1½ ft.....	1 50	12 00	100 00
1½ to 2 ft.....	2 75	25 00	220 00
2 to 3 ft.....	5 00	45 00	400 00
3 to 4 ft.....	10 00	80 00	700 00
4 to 5 ft.....	15 00	125 00	1200 00
5 to 6 ft.....	25 00	200 00	
6 to 7 ft.....	40 00	300 00	

\***CAROLINIANA.** Carolina Hemlock, 40 to 80 ft. This grand new Hemlock, introduced by us, possesses a distinct pyramidal growth and attains a height of 40 to 80 ft. Its dense, dark foliage and graceful habit are approached only by some of the finer Japanese Hemlocks, which it somewhat resembles. Some fine specimens are to be seen in the Arnold Arboretum, and are the first plants of this Hemlock ever sent out, being supplied by us to Prof. C. S. Sargent, director, in 1884.

	Per 10	100
6 to 12 in..	\$2 50	\$22 00
2 to 3 ft..	15 00	
3 to 4 ft..	30 00	275 00
4 to 5 ft..	50 00	400 00
5 to 6 ft..	80 00	700 00
6 to 7 ft..	120 00	

**Vaccinium corymbosum.**  
6 to 12 in. \$2.25 for 10.  
1 to 2 ft. \$4 for 10, \$30 per 100.

**erythrocarpon.** 6 to 12 in.. \$1 50 \$12 00  
1 to 2 ft..... 2 00 18 00

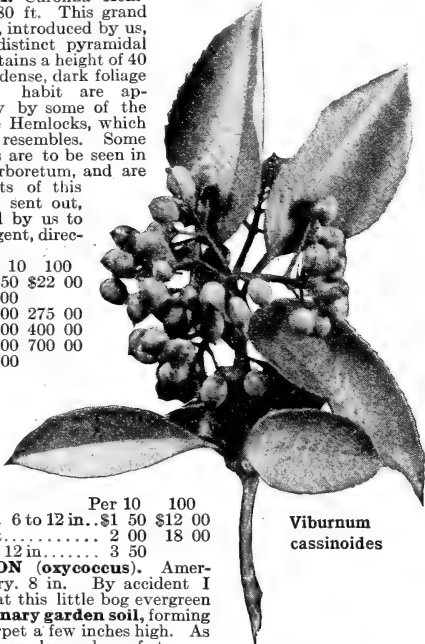
**hirsutum.** 6 to 12 in..... 3 50

\***MACROCARPON (oxycoccus).** American Cranberry. 8 in. By accident I discovered that this little bog evergreen thrives in **ordinary garden soil**, forming a complete carpet a few inches high. As a border plant or along edges of streams or ponds, or as a bog feature, it is unequalled. Foliage turns rich shades of bronze and red in autumn, and, with the scarlet fruit, presents a charming effect the year round. Over 20,000 plants supplied by me to a single estate at my suggestion, with beautiful results

	Per 10	100	1,000
<b>pallidum.</b> 1 to 2 ft.....	\$0 75	\$6 00	\$50 00
2 to 3 ft., clumps.....	2 00	18 00	
2 to 3 ft., clumps.....	4 00	35 00	
<b>pennsylvanicum.</b> 6 to 12 in.....	1 75	16 00	
<b>STAMINEUM.</b> 6 to 12 in.....	1 25	10 00	
1 to 1½ ft.....	2 00	16 00	
1½ to 2 ft.....	3 00	20 00	
1 to 1½ ft., clumps.....	3 50	30 00	
1½ to 2 ft., clumps.....	4 50		

**Viburnum acerifolium.** 6 to 12 in..... 75 6 00 50 00  
1 to 2 ft..... 1 25 10 00  
1 to 2 ft., clumps..... 2 00 18 00  
**alnifolium.** 1 to 2 ft..... 1 75 15 00  
2 to 3 ft..... 3 00 25 00  
3 to 4 ft..... 4 00  
4 to 6 ft..... 6 00

**CASSINOIDES.** A splendid stock of this fine Viburnum. 6 to 12 in..... 1 00 8 00 70 00  
1 to 2 ft..... 1 50 12 00 100 00  
2 to 3 ft..... 1 75 15 00 130 00  
3 to 4 ft..... 4 00 30 00  
4 to 6 ft..... 6 00 50 00  
**dentatum.** 1 to 2 ft..... 1 25 10 00  
2 to 3 ft..... 1 75 15 00  
3 to 4 ft..... 2 50 20 00



**Viburnum  
cassinoides**

# KELSEY'S Hardy American Plants Rhododendrons and Azaleas

Catalog of Highlands Nursery

## TREES, SHRUBS AND VINES, continued

	Per 10	100	1,000
<b>Viburnum lantana.</b> 2 to 3 ft.....	\$2 00		
<b>molle.</b> 2 to 3 ft.....	2 50		
3 to 4 ft.....	3 50		
<b>nudum.</b> 1 to 2 ft.....	1 50		
<b>oxycoccus.</b> 3 to 4 ft.....	2 50		
4 to 6 ft.....	4 50		
<b>prunifolium.</b> 1 to 2 ft.....	2 50	\$20 00	
2 to 3 ft.....	3 50		
<b>Vitis cordifolia.</b> 6 to 12 in.....	1 50		
<b>labrusca.</b> 6 to 12 in.....	1 00	8 00	
<b>XANTHORRHIZA APIIFOLIA.</b> Yellow-root. 1 to 4 ft. Undoubtedly the finest American undershrub for planting under trees, along roadways, walks and borders, or where conditions of extreme moisture prevail. Finely cut foliage remains a good green till autumn, when it turns shades of orange and yellow. Now used by thousands in parks and private grounds. Peculiar brown-purple flowers in pendulous racemes, appear early.			
	Per 10	100	1,000
3 to 6 in.....	\$0 50	\$4 00	\$30 00
6 to 12 in.....	75	5 00	40 00
3 to 6 in., clumps.....	1 00	7 00	60 00
6 to 12 in., clumps.....	1 25	10 00	80 00
1 to 1½ ft., clumps.....	2 00	18 00	150 00
<b>Xanthoxylum americanum.</b> 2 to 3 ft.....	3 00		
<b>Xolisma ligustrina.</b> 6 to 12 in.....	1 00	8 00	
1 to 2 ft.....	1 50	12 00	



Hardy Cacti

## Hardy Herbaceous Perennials

### VINES, AQUATICS, FERNS, ORCHIDS, LILIES AND BULBOUS PLANTS

	Per 10	100	1,000
<b>Acorus calamus.</b> .....	\$1 00	\$8 00	
<b>Actæa alba</b> .....	1 75	16 00	
<b>rubra.</b> .....	2 50	20 00	
<b>Allium cernuum.</b> .....	1 25	10 00	
<b>Amsonia amsonia.</b> Clumps.....	1 00	8 00	
<b>Anemone patens.</b> .....	4 00		
<b>Angelica curtisii.</b> .....	75	6 00	
<b>Apocynum androsæmifolium</b> .....	1 00		
<b>Aquilegia canadensis</b> .....	1 00	8 00	
<b>chrysantha.</b> .....	1 25	10 00	
<b>Aralia nudicaulis.</b> .....	75	6 00	
<b>racemosa.</b> Clumps .....	1 00	8 00	
<b>Archangelica hirsuta</b> .....	75	6 00	
<b>Arisæma triphyllum</b> .....	1 00	8 00	
<b>Artemisia gracilis.</b> .....	2 50		
<b>Aruncus (Spiræa) aruncus</b> .....	1 00	8 00	
<b>Aster,</b> in variety,— <i>cordifolius, curtisii, divaricata,</i> <i>ericoides pilosa, macrophylla, puniceus, umbellatus.</i> .....	1 00	6 00	
<b>Astilbe decandra.</b> .....	1 00		
<b>Baptisia australis.</b> .....	1 50		
<b>tinctoria.</b> .....	1 00	8 00	
<b>Bicuculla (Dicentra) canadensis</b> .....	1 00	7 00	
<b>cucullaria.</b> .....	1 00	7 00	
<b>eximia.</b> .....	1 25	10 00	

**BRODIAEAS** should be ordered in summer and in no event later than October 1, for the current season's shipment.

	Per 10	100	1,000
<b>californica.</b> .....	\$0 60	\$4 00	\$35 00
<b>capita.</b> Blue.....	30	2 00	15 00

EVERGREENS ARE MARKED WITH A STAR (\*)

# KELSEY'S Hardy American Plants Rhododendrons and Azaleas

Catalog of Highlands Nursery

## HARDY HERBACEOUS PERENNIALS, continued

	Per 10	100	1,000
<b>Brodiaea coccinea.</b> 5/8 to 1 in. diameter	\$0 60	\$4 00	\$35 00
<b>grandiflora.</b> Blue	30	2 00	15 00
<b>ixioides splendens.</b> Very fine yellow	40	2 50	22 00
<b>laxa.</b> Fine; blue in umbels	30	2 00	15 00
<b>peduncularis.</b> White. Fine for wet places.	40	2 50	22 00
<b>volubilis.</b> Twining hyacinth 5 to 8 in. diam.	60	4 00	35 00
<b>CACTI.</b> Hardy species. <b>Echinocactus,</b> Mis-			
<b>souriensis, simpsonii, Echinocereus</b>			
<b>viridiflorus, Opuntia arenaria, O.</b>			
<b>camanchia, O. major, O. mesacantha</b>			
<b>cymochilla, O. mesacantha greenii,</b>			
<b>O. polyacantha</b>	5 00	35 00	
<b>Echinocactus.</b> Perpetual Snow	7 00		
<b>Calochortus albus.</b> Pearly white	30	2 00	15 00
<b>benthamii.</b> A charming yellow cup	30	2 00	15 00
<b>catalinae.</b> Lilac; fine eye	1 50	8 00	
<b>gunnisonii.</b> Superb; white; hardy	1 25	6 00	
<b>leichtlinii.</b> Smoky white, Alpine	1 00	4 00	35 00
<b>liliacinus.</b> Satiny lilac	30	2 00	15 00
<b>luteus.</b> Light yellow; no eye	30	2 00	15 00
<b>macrocarpus</b>	1 25	6 00	
<b>maweanus roseus.</b> Rose tinted	40	3 00	
<b>nitidus.</b> Very fine. Lilac, purple blotched;			
hardy	40	3 00	25 00
<b>plummerae.</b> Superb. Fine lilac	1 50	8 00	
<b>splendens type.</b> Fine lilac	1 00	4 00	35 00
<b>venustus citrinus.</b> Deep yellow	30	2 00	15 00
<b>venustus oculatus.</b> White or tinted lilac	30	2 00	15 00
<b>venustus purpurascens.</b> Purple	1 00	4 00	35 00
<b>venustus, roseus</b>	1 00	4 00	35 00
<b>vesta.</b> Finest Mariposa tulip. Very fine bulbs	1 25	6 00	45 00
<b>Calopogon.</b> See <b>Limodorum.</b>			
<b>Caltha leptosepala.</b> Marsh Marigold	1 50		
<b>Camassia cusickii</b>	2 00	8 00	
<b>esculenta.</b> Improved purple	75	3 00	
<b>leichtlinii.</b> Purple	1 00	4 00	35 00
<b>leichtlinii.</b> White to cream-colored	1 25	6 00	45 00
* <b>Carex fraseri</b>	1 25	10 00	
<b>Cassia marylandica</b>	75	6 00	
<b>Caulophyllum thalictroides.</b> Col.	1 00	8 00	
<b>Chamaelirium luteum</b>	1 00	8 00	
<b>Chelone glabra</b>	1 00	8 00	
<b>lyoni</b>	1 00	8 00	
<b>Chrosperma muscætoxicum</b>	75	6 00	
<b>Cicuta maculata</b>	1 00		
<b>Cimicifuga americana</b>	1 00	8 00	
<b>racemosa</b>	75	6 00	
<b>Clematis coccinea</b>	3 00	25 00	
<b>crispa</b>	2 75	20 00	
<b>douglasi</b>	5 00		
<b>fremontii</b>	5 00		
<b>ligusticifolia</b>	3 00		
<b>virginiana</b>	1 00	6 00	
<b>vitalba</b>	1 75		
* <b>Clintonia borealis</b>	75	6 00	
* <b>umbellata</b>	75	6 00	
<b>Collinsonia canadensis</b>	75	6 00	
<b>Convallaria majalis</b>	75	5 00	
<b>Coreopsis lanceolata.</b> Clumps	75	6 00	
<b>major</b>	75	6 00	
<b>rosea.</b> Clumps	1 00	8 00	
<b>verticillata</b>	1 00	8 00	
<b>Cypripedium acaule.</b> Light	75	5 00	40 00
Strong	1 25	10 00	70 00
<b>californicum</b>	2 50	20 00	
<b>hirsutum.</b> Light	75	5 00	40 00
Strong	1 25	10 00	80 00
<b>fasciculatum</b>	2 50	20 00	
<b>parviflorum</b>	1 25	10 00	
<b>REGINÆ (spectabile).</b> Showy Lady's Slipper. 1 to 2 ft. The			
handsomest and one of the rarest of hardy orchids. The broadly			
ovate sepals and petals are pure white, while the large, inflated			
pouch is a beautiful soft red rose-color. A strong grower, preferring			
peat soils. Succeeds well in the rhododendron bed or in the bog.			
June and early July.			
	Per 10	100	1,000
1 to 2 crowns	\$2 50	\$20 00	
3 to 4 crowns	6 00	50 00	
5 to 6 crowns	10 00	80 00	
7 to 8 crowns	12 00	100 00	
<b>Dionæa muscipula.</b> Venus' Fly-trap	1 00	8 00	
<b>Dioscorea villosa</b>	1 00	7 00	
<b>Disporum lanuginosum</b>	1 25	9 00	
<b>Dodecatheon clevelandii.</b> Superb. White			
tinted rose	75	4 50	\$40 00
<b>hendersonii.</b> Very fine; magenta	75	4 50	40 00
<b>patulum.</b> Yellow	75	4 50	40 00
Dodecatheons should be ordered before Octo-			
ber 1.			
<b>Dyphilleia cymosa</b>	1 25	10 00	
* <b>Epigæa repens.</b> Trailing Arbutus. Coll.			
clumps	1 50	12 00	100 00

EVERGREENS ARE MARKED WITH A STAR (\*)

# KELSEY'S Hardy American Plants Rhododendrons and Azaleas

Catalog of Highlands Nursery



*Eupatorium ageratoides*

## HARDY HERBACEOUS PERENNIALS, continued

	Per 10	100	1,000
<i>Erythronium albidum</i> .....	\$1 50		
<i>americanum</i> .....	50	\$2 00	\$16 00
<i>grandiflorum</i> . Bright yellow.....	1 00	4 00	35 00
<i>citrinum</i> . Light yellow, deep orange center.....	1 00	4 00	35 00
<i>californicum</i> . The standard cream sort....	50	2 00	16 00
<i>giganteum</i> . True. Pure white.....	1 00	4 00	35 00
<i>hartwegii</i> . Cream, yellow at center.....	50	2 00	16 00
<i>hendersonii</i> . Splendid lilac maroon center.....	1 00	4 00	35 00
<i>revolutum</i> . White, changing to purples....	1 00	4 00	35 00
<i>purpurascens</i> . Handsome variety—from high mountains, where it endures great cold. Bright yellow turning to purple. Hardest California variety. 6 to 12 in. high.....	1 00	4 00	35 00
Mixture.....		2 50	16 00
<i>Eupatorium ageratoides, perfoliatum and purpureum</i> .....	1 25	10 00	
<i>Euphorbia, corollata</i> .....	1 00	8 00	

## Ferns, Hardy Native Species

	Per 10	100	1,000
<i>Adiantum pedatum</i> .....	\$1 25	\$10 00	
<i>Asplenium filix-foemina</i> .....	1 00	8 00	
<i>thelypteroides</i> .....	1 00	8 00	
<i>Athyrium thelypteroides</i> .....	1 00	8 00	
* <i>Botrychium virginicum</i> .....	1 00	7 00	
* <i>Camptosorus rhizophyllus</i> . Walking Fern...	1 25	10 00	
<i>Cheilanthes fendleri</i> .....	4 00		
<i>Dicksonia punctilobula</i> . Clumps.....	1 00	8 00	\$50 00
* <i>Dryopteris acrostichoides</i> .....	1 00	8 00	60 00
<i>angustifolia</i> .....	1 25		
<i>goldiana</i> .....	1 25	10 00	
* <i>marginalis</i> .....	1 00	8 00	60 00
* <i>munitum</i> .....	3 00	25 00	
* <i>novaboracensis</i> .....	1 00	8 00	
* <i>spinulosa</i> .....	1 00	8 00	60 00
<i>thelypteris</i> .....	1 00	8 00	
<i>Onoclea sensibilis</i> .....	1 00	8 00	
<i>Osmunda cinnamomea, claytoniana and regalis</i> .....	1 50	12 00	100 00
<i>Phegopteris hexagonoptera</i> .....	1 00	8 00	
* <i>Polypodium vulgare</i> .....	75	6 00	35 00
<i>Pteris aquilina</i> .....	75	5 00	30 00

EVERGREENS ARE MARKED WITH A STAR (\*)

# KELSEY'S Hardy American Plants Rhododendrons and Azaleas

Catalog of Highlands Nursery

## HARDY HERBACEOUS PERENNIALS, continued

<b>Fritillaria biflora.</b> Nearly black. Low bell-shaped.....	Per 10	100	1,000
	\$1 25	\$6 00	
<b>pluriflora.</b> Very fine. Nearly purple red....	1 25	6 00	
<b>coccinea.</b> Deep crimson.....	1 00	4.00	\$35 00
<b>lanceolata gracilis.</b> Nearly black-purple...	1 25	6 00	
<b>recurva.</b> Orange-scarlet. $\frac{3}{4}$ to 1 in. diam....		3 00	25 00
1 to 1 $\frac{1}{4}$ in. diam.....	1 00	4 00	35 00
Order Fritillarias before Oct. 1, if possible.			
<b>*GALAX APHYLLA.</b> Established clumps.....	1 50	12 00	90 00
Collected clumps.....	1 00	8 00	50 00
<b>Gaultheria procumbens.</b> Col. clumps.....	1 00	8 00	50 00
<b>Gillenia.</b> See <b>Porteranthus.</b>			
<b>Glechoma (Nepeta) herderacea.</b> Col.....	75	5 00	40 00
<b>Gentiana andrewsii.</b> Light.....	75	5 00	35 00
Strong.....	1 00	6 00	50 00
<b>Geranium maculatum</b> .....	75	6 00	
<b>Goodyera.</b> See <b>Peranium.</b>			
<b>Habenaria ciliaris</b> .....	1 00	8 00	
<b>hookeriana</b> .....	1 00	8 00	
<b>peramoena</b> .....	1 75	15 00	
<b>psycodes</b> .....	1 75	15 00	
<b>Helenium autumnale</b> .....	1 00	8 00	
<b>Helianthus strumosus</b> .....	1 00	8 00	
<b>*Helonias bullata</b> .....	1 00	8 00	
<b>Hepatica acuta</b> .....	1 00	8 00	
<b>Heuchera americana and villosa</b> .....	1 00	8 00	
<b>Hibiscus, Crimson-eye, moscheutos and rose-pink</b> .....	1 00	8 00	
<b>Houstonia purpurea and *serpyllifolia</b> .....	75	6 00	40 00
<b>Hydrastis canadensis</b> .....	1 00	8 00	
<b>*Iris cristata.</b> Clumps.....	1 50	10 00	80 00
Single plants.....	60	4 00	30 00
<b>douglasiana</b> .....	4 00		
<b>missouriensis</b> .....	1 50	12 00	
<b>pseudacorus</b> .....	1 00	8 00	
<b>*verna.</b> Clumps.....	1 50	10 00	
Single plants.....	60	4 00	30 00
<b>versicolor</b> .....	1 00	8 00	
<b>Lacinaria (Liatris) grandiflora pilosa</b> .....	1 25		
<b>pycnostachya</b> .....	1 00	8 00	
<b>spicata</b> .....	1 00	8 00	
<b>spicata pumila</b> .....	1 00		
<b>squarrosa</b> .....	1 50		
<b>Leucocrinum montanum</b> .....	2 50		
<b>Liatris.</b> See <b>Lacinaria.</b>			



*Lilium carolinianum* (see page 20)

**LILIES.** Should always be ordered in spring or summer for fall shipment where possible. Many species are exhausted early and some do not ship or transplant well in the spring. *L. superbum*, *L. canadense* and *L. carolinianum* thrive planted in March, April or May, though September and October planting is preferable.

# KELSEY'S Hardy American Plants Rhododendrons and Azaleas

Catalog of Highlands Nursery

## HARDY HERBACEOUS PERENNIALS, continued

	Per 10	100	1,000
<i>Lilium bolanderi</i> .....	\$7 00	\$45 00	
<b>CANADENSE.</b> 2nd size.....	60	5 00	\$36 00
1st size.....	1 00	8 00	60 00
<b>CAROLINIANUM.</b> 3rd size.....	60	5 00	
2nd size.....	1 00	8 00	
1st size.....	1 50	12 00	
<b>columbianum</b> .....	3 00	20 00	
<b>GRAYI.</b> 2nd size.....	1 00	8 00	
1st size.....	1 50	12 50	100 00
<b>humboldtii.</b> 7 to 8 in. cir.....	3 00	20 00	160 00
8 to 9 in. cir.....	3 50	25 00	180 00
9 in. and over.....	6 50	45 00	
<b>kelloggii</b> .....	6 50	45 00	
<b>pardalinum.</b> 1 eye.....	1 50	12 50	70 00
Heavier.....	2 00	16 00	
<b>parryii.</b> Medium.....	6 50	45 00	
Large.....	10 00	75 00	
<b>parvum.</b> Good.....	4 00	30 00	
Large.....	7 00	45 00	
<b>philadelphicum</b> .....	1 50	8 00	60 00
<b>rubescens</b> .....	6 50	45 00	
<b>SUPERBUM.</b> 3rd size.....	40	2 00	18 00
2nd size.....	75	5 00	35 00
1st size.....	1 00	8 00	60 00
<b>washingtonianum, var. purpureum</b>			
7 to 8 in.....	2 50	20 00	
8 to 9 in.....	4 00	30 00	
9 to 12 in.....	6 50	48 00	
<b>Limodorum (Calopogon) tuberosum</b> .....	1 50	12 00	
<b>Lobelia cardinalis and syphilitica</b> .....	1 00	8 00	
<b>Medeola virginica</b> .....	1 00	8 00	
<b>Melanthium parviflorum and virginicum</b> .....	1 00	8 00	
<b>Menispermum canadense.</b> Moonseed.....	75	6 00	
<b>Mertensia virginica</b> .....	1 50	12 00	
<b>Mimulus ringens</b> .....	1 00	8 00	
* <b>Mitchella repens.</b> Cl. Col.....	1 00	8 00	60 00
<b>Monarda didyma</b> .....	1 25	10 00	
<b>Nuphar advena</b> .....	1 25	10 00	
<b>Nymphaea odorata rosea.</b> Very rare.....	8 50	75 00	
<b>Orchis spectabilis</b> .....	2 00	16 00	
<b>Orontium aquaticum</b> .....	1 50		
<b>Panax (Aralia) quinquefolium.</b> 3rd.....	75	6 00	
2nd.....	1 25	10 00	
1st.....	1 75	15 00	
X size.....	2 50	22 00	
XX size.....	4 00	35 00	
* <b>Peramium (Goodyera) pubescens and repens</b> .....	1 75		
* <b>Phlox subulata alba</b> .....	1 50	12 00	
<b>Phyllostachya aurea.</b> Golden Bamboo.....	4 00		
<b>Physostegia virginiana</b> .....	75	6 00	
<b>Podophyllum peltatum</b> .....	75	6 00	
<b>Polygonatum biflorum</b> .....	75	6 00	
<b>commutatum</b> .....	1 00	8 00	
<b>Polygonum cilinode.</b> .....	75	5 00	
<b>Porteranthus (Gillenia) stipulatus</b> .....	1 00	8 00	
* <b>Potentilla tridentata</b> .....	1 00	8 00	
<b>Pyrola rotundifolia.</b> Col.....	1 00	8 00	
<b>Rhexia virginica</b> .....	1 00	8 00	
<b>SANGUINARIA CANADENSIS.</b> Bloodroot.			
Strong.....	75	6 00	36 00
Sanguinaria is shipped entirely at consignee's risk.			
* <b>Sarracenia catesbaei, drummondii, flava, psittacina, rubra</b> .....	1 75	15 00	
<b>purpurea</b> .....	1 50	12 00	
<b>Saxifraga micranthidifolia</b> .....	1 50	12 00	
<b>michauxii</b> .....	1 50		
<b>Sedum telephoides and ternatum</b> .....	1 00	8 00	
* <b>SHORTIA GALACIFOLIA.</b> 2nd size.....	2 00	18 00	
1st size.....	4 00	35 00	
<b>Silene stellata</b> .....	1 00	8 00	
<b>virginica</b> .....	1 25	10 00	
<b>Solidago canadensis, bootii, bicolor, erecta, glomerata, nemerocallis, odora, pallida, patula, pubens, rugosa and rupestris</b> ..	1 00	8 00	65 00
<b>SPIGELIA MARYLANDICA</b> .....	3 00	20 00	
<b>Stachya aspera</b> .....	75	6 00	
<b>Steironema ciliatum, quadrifolium and terestris</b> .....	75	6 00	
<b>STENANTHIUM ROBUSTUM.</b> Mt. Feather Fleece. 3 to 5 ft. Tall, with extremely showy panicles often 2 feet long. This is one of our recent introductions, and is, without doubt, a plant that will be used by thousands when known. The pure white flowers are borne on graceful compound panicles, often 2 to 3 feet long, and a clump of these plants makes a show equaled by few herbaceous plants of any description.			
	Per 10	100	1,000
3rd size.....	\$1 00	\$8 00	\$60 00
2nd size.....	1 50	12 50	100 00
1st size.....	3 00	26 00	
<b>Stokesia cyanea</b> .....	1 00		

EVERGREENS ARE MARKED WITH A STAR (\*)

# KELSEY'S Hardy American Plants Rhododendrons and Azaleas

Catalog of Highlands Nursery

## HARDY HERBACEOUS PERENNIALS, continued

	Per 10	100	1,000
<i>Thalictrum dioicum</i> .....	\$0 80	\$6 00	
<i>Thermopsis caroliniana</i> . Strong.....	1 00	8 00	
<i>Light</i> .....	60	5 00	
<i>Therofon aconitifolia</i> .....	75	6 00	
<i>Tradescantia montana</i> .....	1 00	8 00	
<i>Trautvetteria carolinensis</i> .....	1 25		
<i>Trillium cernuum</i> .....	1 00	8 00	
<i>erectum</i> . 2nd size.....	40	3 00	\$18 00
1st size.....	75	5 00	30 00
<i>erectum album</i> .....	1 25	10 00	
<b>TRILLIUM GRANDIFLORUM</b> . 2nd size.....	30	1 50	12 00
Over 20,000 strong bulbs, 1st size.....	60	3 50	20 00
<i>nivale</i> .....	1 25		
<i>recurvatum</i> .....	1 25	10 00	
<i>sessile</i> , var. <i>californicum</i> .....	1 00	7 50	55 00
<i>sessile</i> , var. <i>Snow Queen</i> .....	1 00	7 50	55 00
<b>TRILLIUM STYLOSUM</b> . 2nd size.....	60	4 00	
Over 20,000 strong bulbs, 1st size.....	1 00	8 00	60 00
<i>undulatum</i> . 2nd size.....	60	4 00	30 00
1st size.....	75	6 00	40 00
<i>Triosteum perfoliatum</i> .....	1 00		
<i>Typha angustifolia</i> and <i>latifolia</i> .....	1 50		
<i>Uvularia grandiflora</i> , <i>perfoliata</i> and <i>sessilifolia</i> .....	1 00	8 00	
<i>Vagneria racemosa</i> .....	1 00	8 00	
<i>Veratrum viride</i> .....	1 00	8 00	
<i>Viola canadensis</i> .....	1 00		
<i>pedata</i> .....	1 00	8 00	
<i>pedata bicolor</i> .....	1 75	14 00	
<i>sagittata</i> .....	1 00		
<i>rotundifolia</i> .....	1 00		
* <i>Xerophyllum asphodeloides</i> . Col. Cl.....	2 00	15 00	
* <i>Yucca filamentosa</i> .....	2 00		
<i>filamentosa</i> , var. <i>concava</i> .....	2 00		
<i>fiaccida</i> , var. <i>concava</i> .....	1 00	8 00	60 00
<i>glauca</i> .....	1 50	12 50	
<i>whippleyi</i> .....	1 50	12 50	

## Catalog Salem Nurseries

Salem, Mass. On Marblehead Road

An unusually fine lot of specimen Evergreens, Azaleas, Rhododendrons, Kalmias, Andromedas, Leucothoes and Shrubs. Personal inspection is invited and special prices made for carload shipments. August to October planting for most conifers and broad-leaved evergreens noted above is very desirable.

Special selection is always charged for at prices to suit the material, with packing at cost, and in *Rhododendron catawbiense*, *R. maximum* and *Azalea arborescens* the most exacting requirements can be met. A visit to my Salem Nurseries will well repay the large or small buyer.

HARLAN P. KELSEY, Owner

Telephone

285 Essex St., Salem, Mass.

	Each	10	100
* <i>Abies concolor</i> . White Fir. 2 ft.....	\$2 50	\$20 00	
<i>fraseri</i> . Fraser's Balsam Fir. 1 to 1½ ft.....	50	3 50	
3 to 4 ft.....	2 00		
* <i>douglassi</i> . See <i>Pseudotsuga</i> .			
* <i>nordmanniana</i> . Nordmann's Fir. 2 to 3 ft.....	3 00	25 00	
3 to 4 ft.....	4 00	35 00	
<i>Acer dasycarpum wieri</i> . Wier's Cut-leaved Silver Maple. 8 to 10 ft.....	1 50	12 00	
<i>plantanoides</i> . Norway Maple. 14 to 16 ft... ..	3 50	35 00	
<i>platanoides</i> var. <i>schwedleri</i> . Purple-leaved Norway Maple. 6 to 8 ft.....	2 50		
<i>polymorphum</i> , in var. Japanese Maple. 1 to 1½ ft.....	1 25	10 00	
<i>saccharum</i> . Sugar Maple. 12 to 14 ft.....	2 50	20 00	
<i>Actinidia arguta</i> 2 to 3 ft.....	50	3 50	
<i>polygama</i> . 4 to 5 ft.....	50		
<i>Amelanchier botryapium</i> . Shad Bush.....			
2 to 3 ft.....	40	3 00	\$25 00
5 to 6 ft.....	75	6 00	
5 to 7 ft.....	1 00	8 00	
<i>Ampelopsis englemanni</i> . Heavy, 3 yrs.....	50	4 00	
<i>quinquefolia</i> . Heavy.....	50	4 00	
<i>veitchii</i> . Boston Ivy. Strong.....	50	4 00	
* <i>Andromeda (Pieris) floribunda</i> . Extra fine, American native grown stock. 6 to 12 in... ..	1 25	12 00	100 00
1 to 1½ ft.....	1 75	16 00	150 00
<i>Aralia pentaphylla</i> . 2 to 3 ft.....	50	4 00	30 00
3 to 4 ft.....	75	6 00	50 00
<i>Aristolochia siphon</i> . 4 to 6 ft.....	1 50	12 00	
<i>Aronia nigra</i> . 1 to 2 ft.....	30	2 50	20 00
<i>arbutifolia</i> . 3 to 4 ft.....	1 00	8 00	70 00

EVERGREENS ARE MARKED WITH A STAR (\*)

# KELSEY'S Hardy American Plants Rhododendrons and Azaleas

## Catalog of Salem Nursery

	Each	10	100
<b>Azalea arborescens.</b> Magnificent clumps with hundreds of buds. 1 to 1½ ft.....	\$0 40	\$3 50	\$30 00
1 to 2 ft.....	75	5 00	45 00
2 to 3 ft., clumps.....	4 00	35 00	300 00
<b>canescens.</b> 1 to 1½ ft.....	65	5 00	
<b>gandavensis.</b> Ghent A., assorted colors....			
1 to 1½ ft.....	1 25	12 00	
* <b>hinodegira,</b> New scarlet Japanese species			
1 to 1½ ft.....	1 75	16 00	150 00
<b>Azalea lutea.</b> Flame Azalea. 1 to 1½ ft.....	50	4 00	35 00
1 to 2 ft.....	50	4 00	35 00
2 to 3 ft.....	1 00	8 00	
Extra selection \$1.50 to \$3.00 each.			
<b>mollis.</b> In variety. 1 to 1½ ft.....	1 00	9 00	
1½ to 2 ft.....	1 50	12 00	
<b>nudiflora.</b> 1 ft.....	75	6 00	
2 to 3 ft.....	1 25	12 00	
<b>vaseyi.</b> 1 to 1½ ft.....	1 00	8 00	70 00
1½ to 2 ft.....	1 50	12 50	110 00
2 to 3 ft., clumps.....	2 50	22 00	
<b>viscosa.</b> 1 to 1½ ft.....	50	4 00	
1½ to 2 ft.....	75	6 00	
<b>Berberis thunbergii.</b> 1 to 1½ ft.....	35	3 00	25 00
1½ to 2 ft.....	50	4 50	40 00
2 to 3 ft.....	80	7 50	65 00
<b>vulgaris.</b> 1 to 2 ft.....	30	2 50	22 00
2 to 3 ft.....	60	4 50	35 00
<b>vulgaris purpurea.</b> 2 to 3 ft.....	45	4 00	
<b>Betula lutea.</b> Yellow Birch. 6 to 8 ft.....	1 00	8 00	60 00
<b>papyrifera.</b> 5 to 7 ft.....	75	6 00	
<b>Butneria florida.</b> 2 to 3 ft.....	40	3 00	
* <b>Buxus sempervirens.</b> Box. Bush form.....			
1 to 1½ ft.....	1 50	12 00	90 00
1½ to 2 ft.....	2 00	18 00	
* <b>pyramidal.</b> 3 to 4 ft.....	4 00	35 00	
* <b>standard.</b> 3 to 4 ft.....	3 50	30 00	
* <b>half standard.</b> 1½ to 2 ft.....	2 50	20 00	
<b>Caragana arborescens.</b> 4 to 6 ft.....	1 25	10 00	
<b>Carpinus caroliniana.</b> Water Beech. 6 to 8 ft.	1 00	8 00	70 00
<b>Cercis canadensis.</b> 2 to 3 ft.....	40	3 50	
<b>Chamædaphne calyculata.</b> 12 in., clumps....	50	4 00	35 00
<b>Chamæcyparis sphaeroidea.</b> 2 to 4 ft.....	1 00	8 00	
<b>Chionanthus virginica.</b> 4 to 6 ft.....	1 50	12 00	
<b>Celastrus punctata.</b> 2 to 3 ft.....	50	4 00	
<b>scandens.</b> 1½ to 2 ft.....	40	3 50	30 00
<b>Clematis apiifolia.</b> 3 yr.....	35	3 00	
<b>crispa.</b> 2 yr.....	40	3 50	
<b>paniculata.</b> Heavy.....	50	4 00	35 00
<b>virginiana.</b> 3 to 4 ft.....	50	4 00	35 00
<b>Cornus stolonifera aurea.</b> 1 to 2 ft.....	40	3 50	
<b>florida rubra.</b> 6 to 7 ft.....	4 00		
<b>sanguinea.</b> 3 to 4 ft.....	50	4 00	
<b>Crataegus oxyacantha.</b> Dbl. white. 3 to 5 ft..	1 25	10 00	
<b>oxyacantha.</b> Dbl. pink. 3 to 4 ft.....	1 25	10 00	
<b>oxyacantha.</b> Paul's Scarlet. 2 to 4 ft.....	1 25	10 00	
<b>punctata.</b> 3 to 5 ft.....	60	5 00	45 00
<b>Deutzia crenata.</b> 2 to 3 ft.....	40	3 50	
<b>lemoinei.</b> 2 to 3 ft.....	50	4 00	
* <b>Euonymus radicans.</b> 2 yrs.....	35	3 00	25 00
3 yrs.....	65	6 00	50 00
<b>Forsythia fortunei.</b> 3 to 4 ft.....	60	5 00	40 00
<b>intermedia.</b> 3 to 4 ft.....	60	5 00	40 00
<b>suspensa.</b> 3 to 4 ft.....	40	3 50	30 00
<b>viridissima.</b> 3 to 4 ft.....	50	4 00	30 00
<b>Fraxinus lanceolata.</b> Green Ash. 6 to 8 ft....	1 00	7 00	50 00
<b>Gleditschia triacanthos.</b> 4 to 6 ft.....	1 50	12 00	
5 to 7 ft.....	2 00	18 00	
<b>Hamamelis virginica.</b> 3 to 4 ft.....	75	6 00	50 00
<b>Halesia tetraptera.</b> Silver Bell. 3 to 4 ft.....	60	5 00	
<b>Hydrangea paniculata grandiflora.</b> Very			
heavy. 1 to 2 ft.....	40	3 50	30 00
2 to 3 ft.....	60	5 00	45 00
<b>Ilex verticillata.</b> 2 to 3 ft.....	60	5 00	
* <b>Juniperus sabina.</b> Very heavy. 2 to 2½ ft....	2 00	18 00	
2½ to 3 ft.....	3 50	30 00	
* <b>tamaricifolia.</b> 1½ to 2 ft.....	3 50	30 00	
* <b>virginiana.</b> 3 to 4 ft.....	1 25	10 00	
* <b>Kalmia angustifolia.</b> 1 to 1½ ft.....	50	4 00	
Clumps 1½ to 2 ft.....	75	6 00	
* <b>latifolia.</b> All heavy clumps. 1 to 1½ ft....	1 25	8 00	60 00
1½ to 2 ft.....	2 00	18 00	150 00
2 to 3 ft.....	3 50	30 00	250 00
<b>Larix americana.</b> 5 to 7 ft.....	1 50		
* <b>Leucothoe catesbaei.</b> 6 to 12 in., cls. ....	50	4 00	35 00
1 to 1½ ft., cls.....	1 00	8 00	70 00

EVERGREENS ARE MARKED WITH A STAR (\*)

NOTE.—All stock offered in this Catalog is nursery-grown, unless otherwise specially noted



# KELSEY'S Hardy American Plants Rhododendrons and Azaleas

## Catalog of Salem Nursery

	Each	10	100
<b>Ligustrum ibota.</b> 1½ to 2 ft.....	\$0 35	\$3 00	
<b>regelianum.</b> 1 to 2 ft.....	35	3 00	\$20 00
2 to 3 ft.....	60	5 00	40 00
<b>Liquidambar styraciflua.</b> Sweet Gum.....			
6 to 8 ft.....	1 50	12 00	
<b>Lonicera halliana.</b> 1 to 2 ft. Heavy.....	35	3 00	25 00
<b>morrowii.</b> 3 to 4 ft.....	75	6 00	50 00
<b>tatarica.</b> 3 to 4 ft.....	75	6 00	
<b>Lycium barbarum.</b> 1½ to 2 ft.....	40	3 00	
<b>Magnolia alexandriana.</b> 4 to 5 ft.....	2 00	18 00	
<b>lennei.</b> 3 to 4 ft.....	2 00	18 00	
<b>soulangeana.</b> 4 to 5 ft.....	2 00	18 00	
<b>speciosa.</b> 4 to 5 ft.....	2 00		
<b>tripetala.</b> 2 to 4 ft.....	75		
* <b>Mahonia japonica.</b> 6 to 12 in.....	50	4 00	35 00
<b>Myrica cerifera.</b> 1 ft.....	60	5 00	
<b>Oxydendrum arboreum.</b> 1 to 2 ft.....	50	4 00	
<b>Philadelphus coronarius.</b> 3 to 4 ft.....	50	4 00	
* <b>Picea canadensis.</b> White Spruce. 2 to 3 ft.....	1 50	12 00	100 00
3 to 3½ ft.....	2 00	15 00	140 00
3½ to 4 ft.....	3 00	25 00	
* <b>excelsa.</b> Norway Spruce. 3 to 4 ft.....	1 25	10 00	
* <b>mariana.</b> Black Spruce. 3 to 4 ft.....	1 50	12 00	
* <b>pungens kosteri.</b> Blue Spruce. The bluest type of this interesting American conifer.			
1 to 1½ ft.....	2 00	18 00	170 00
1½ to 2 ft.....	3 00	27 00	260 00
2 to 3 ft.....	4 50	40 00	
* <b>Pinus banksiana.</b> 5 to 7 ft.....	1 75	15 00	
7 to 8 ft.....	2 50	22 00	
* <b>divaricata.</b> 1 to 2 ft.....	65	5 00	40 00
2 to 3 ft.....	80	7 00	60 00
* <b>pungens.</b> Table Mountain Pine. 2 to 3 ft ..	50	4 00	
3 to 4 ft.....	75	6 00	50 00
4 to 6 ft.....	1 50	12 00	
<b>rigida.</b> 2 to 3 ft.....	75	6 00	50 00
* <b>Pinus strobus.</b> White Pine. 5 to 6 ft.....	3 50	30 00	
6 to 8 ft.....	4 50	40 00	
* <b>sylvestris.</b> Scotch Pine. 2 to 4 ft.....	1 50	12 00	
<b>Platanus orientalis.</b> 8 to 10 ft.....	2 00	18 00	
<b>Populus bolleana.</b> Pyramidal Silver Poplar.			
8 to 10 ft.....	1 50	12 00	
<b>fastigiata.</b> Lombardy Poplar. 8 to 10 ft...	1 00	8 00	70 00
10 to 12 ft.....	1 75	15 00	130 00
* <b>Pseudotsuga taxifolia.</b> Douglas Spruce....			
1 to 2 ft.....	1 50	12 00	100 00
2 to 3 ft.....	2 00	16 00	150 00
<b>taxifolia glauca.</b> 3 to 4 ft.....	4 00		
* <b>Rhododendron catawbiense.</b> With balls, diameter pro- Each 10			
portionate to height. 1 to 1½ ft., clumps.....	\$1 25	\$9 00	
1½ to 2 ft., clumps.....	2 00	18 00	
2 to 3 ft., clumps.....	3 50	30 00	
3 to 4 ft., clumps.....	6 50		
I have the largest collection of Hardy Native Rhododendrons in existence, with a stock of tens of thousands to draw from. Special quotations in car lots or large quantities. Catawbiense has the best leaf of all the family and is particularly useful for massing in woods or borders of streams and ponds. See Pages 11 and 12 in this catalog and full description in large Highlands Nursery Catalog.			
* <b>Hybrids,</b> hardiest varieties, including the following: <b>Abraham Lincoln, Album Elegans, Grandiflorum, Caractacus, Catawbiense Alba, Everestianum, General Grant, Mrs. Milner</b> and others, according to size and selection. \$1.50 to \$4 each. Each 10 100			
* <b>maximum.</b> Finest Nursery grown stock with balls. 1 to 1½ ft., clumps.....	\$1 00	\$8 00	
1½ to 2 ft., clumps.....	1 50	12 50	
2 to 3 ft., clumps.....	2 50	22 00	
3 to 4 ft., clumps.....	4 00	35 00	
4 to 5 ft., clumps.....	\$5 00 to 12 00		
All clumps are burlapped.			
<b>punctatum.</b> 6 to 12 in.....	75	6 00	
<b>Rhodora canadensis.</b> 6 to 12 in.....	50		
<b>Rhodotypus kerroides.</b> 2 to 3 ft.....	45	4 00	
<b>Rhus aromatica.</b> Fragrant Sumac. 3 to 4 ft...	75	6 00	
<b>cotinoides.</b> Very rare species. 6 to 8 ft. \$3 to 6 00			
<b>Rosa rugosa.</b> 1 to 1½ ft., heavy.....	40	3 50	\$30 00
1½ to 2 ft.....	60	5 00	45 00
<b>rugosa alba.</b> 1 to 1½ ft.....	50	4 00	40 00
<b>Ramblers.</b> In variety .....50c. to 1 00			
<b>Salix alba.</b> White Willow. 4 to 6 ft.....	60	5 00	
<b>argentea.</b> 4 to 5 ft.....	50	4 50	
<b>britzensis.</b> 4 to 6 ft.....	60	5 00	
<b>pentandra</b> 4 to 6 ft.....	60	5 00	
<b>regalis.</b> 3 to 4 ft.....	60	5 00	
<b>sieboldii.</b> 4 to 6 ft.....	60	5 00	
<b>tradescantia.</b> 4 to 6 ft.....	60	5 00	
<b>vitellina.</b> 4 to 6 ft.....	60	5 00	
<b>vitellina aurea.</b> 2 to 3 ft.....	60	5 00	
<b>Sassafras officinale.</b> 4 to 6 ft.....	75	5 00	

EVERGREENS ARE MARKED WITH A STAR (\*)

"Clumps" always cost more than single plants. A comparison will tell why



# Fall Planting of American Lilies and Trilliums

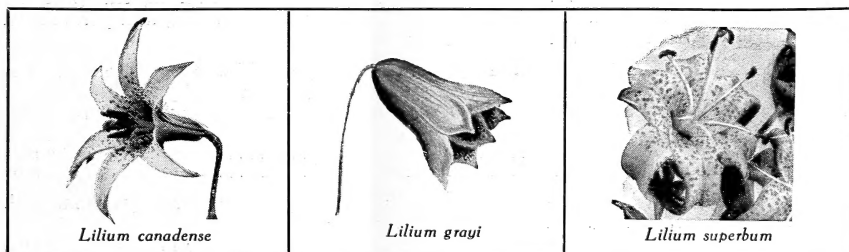
## For Permanence

**O**UR native Lilies are the most useful for real permanence. Exotic species rarely persist, but get weaker and die out after a few seasons.

For shrubberies and herbaceous borders, and especially for the Rhododendron bed, and the open edge of woodlands, the native species named below are unexcelled, grow stronger year by year, and produce gorgeous effects.

For best results, plant in September or October, 4 to 5 inches deep in rich loam. *Lilium grayi* and *L. canadense* will stand considerable moisture. The finest show is made by planting five to ten bulbs a few inches apart in a clump, the clumps 2 to 4 feet apart, according to conditions, hundreds or thousands of bulbs often being none too many to use. *L. superbum* is a tall species, often reaching 6 to 8 feet in height; *L. canadense* comes next, and *L. grayi* from 1½ to 3 feet; so judgment should be used in placing.

Prices below packed ready for shipment at my Highlands Nursery, Pineola, North Carolina



## LILIES

**LILIUM CANADENSE.** Wild Yellow Lily. 2 to 5 feet. Yellow or orange, usually spotted with brown. July.

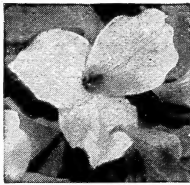
	Per 10	100	1,000
First size.....	\$1 00	\$8 00	\$60 00
Second size.....	60	5 00	36 00

**L. GRAYI.** 1½ to 3 feet. Introduced by me in 1888, it has proved the leader in the bell-shaped type of hardy Lilies. Dark red-brown petals, beautifully spotted. An exquisite species and very rare. Bulbs are never large.

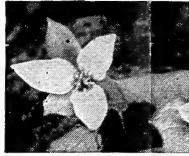
	Per 10	100	1,000
First size.....	\$1 50	\$12 50	\$100 00
Second size.....	1 00	8 00	

**L. SUPERBUM.** Turk's Cap Lily. 3 to 6 feet. No description will do justice to this magnificent American Lily. Golden recurved petals, the flowers in perfect pyramids, often 40 on a single stalk. A clump of them is literally a blaze of scarlet and gold.

	Per 10	100	1,000
First size.....	\$1 00	\$8 00	\$60 00
Second size.....	75	5 00	35 00



*Trillium grandiflorum*



*Trillium erectum*



*The Bloodroot*

**SANGUINARIA CANADENSIS.** Bloodroot. One of the most dainty and exquisite of our early spring flowers. Give it rich, deep, moist loam and partially shady situation and you will be well repaid. 75 cts. for 10, \$6 for 100, \$36 per 1,000.

**STENANTHIUM ROBUSTUM.** Mt. Feather Fleece. 3 to 5 feet. Tall, with extremely showy panicles often 2 feet long. This is one of our recent introductions, and is, without doubt, a plant that will be used by thousands when known. The pure white flowers are borne on graceful compound panicles, often 2 to 3 feet long, and a clump of these plants makes a show equaled by few herbaceous plants of any description.

	Per 10	100	1,000
First size.....	\$3 00	\$26 00	
Second size.....	1 50	12 50	\$100 00
Third size.....	1 00	8 00	60 00

## TRILLIUMS

For edge or under-woods planting, nothing equals the trilliums. They must be planted in large quantities for showiest effects, though a single strong clump of say 25 or 50 bulbs in a garden or border is a wonderfully beautiful thing, and permanent. Brilliant scarlet fruit pods succeed the showy flowers.

**TRILLIUM GRANDIFLORUM.** Large-flowered Wake Robin. 8 to 18 inches. The finest and largest species. Flowers 2 to 3 inches across, in April and May. One of our best early spring flowers. White, turning rose-color or marked with green.

	Per 10	100	1,000
First size, large bulbs.....	\$0 60	\$3 50	\$20 00
Second size, medium.....	30	1 50	12 00

**T. ERECTUM.** Erect Wake Robin. 8 to 16 inches. Large, red fruit, very ornamental. Brown-purple, often greenish. April and May.

	Per 10	100	1,000
First size.....	\$0 75	\$5 00	\$30 00
Second size, light.....	40	3 00	18 00

**T. STYLOSUM.** Nodding Trillium. 1 to 1½ feet. Our rarest mountain species. April and May. Large wavy petals of beautiful pink.

	Per 10	100	1,000
First size, large bulbs.....	\$1 00	\$8 00	\$60 00
Second size, medium bulbs.....	60	4 00	

**T. UNDULATUM.** Painted Wake Robin. 8 inches. Earliest, blooming in April. Showy flowers and fruit. White, with purple stripes.

	Per 10	100	1,000
First size.....	\$0 75	\$6 00	\$40 00
Second size.....	60	4 00	30 00

Always address,

# HARLAN P. KELSEY

Owner

**SALEM, MASSACHUSETTS**

Owner, **HIGHLANDS NURSERY**, in the Carolina mountains, 3,800 feet elevation, and **SALEM NURSERIES, SALEM, MASS.**

Field Investigations by Botany  
 RECEIVED  
 SEP 30 1911  
 Answered



# KELSEY'S Hardy American Plants Rhododendrons and Azaleas

## Catalog of Salem Nursery

	Each	10	100
<b>Spiraea, Anthony Waterer.</b> 1 to 1½ ft. ....	\$0 30	\$2 50	
1½ to 2 ft. ....	60	5 00	\$40 00
<b>thunbergii.</b> 2 to 3 ft. ....	40	3 50	30 00
<b>van Houttei.</b> 3 to 4 ft. ....	75	6 00	50 00
<b>Stephenandra flexuosa.</b> 2 to 3 ft. ....	60	5 00	
<b>Stuartia pentagyna.</b> 1 to 1½ ft. ....	75	6 00	
3 to 4 ft. ....	1 50	12 00	
<b>Symphoricarpus racemosus.</b> 2 to 4 ft. ....	75	6 00	50 00
<b>vulgaris.</b> 2 to 3 ft. ....	60	5 00	
<b>Syringa vulgaris.</b> 1 to 1½ ft. ....	25	2 00	18 00
2 to 3 ft. ....	50	4 00	30 00
<b>vulgaris alba.</b> 2 to 3 ft. ....	50	4 00	35 00
<b>Named Varieties.</b> 2 to 3 ft. .... 75c. to	1 25		
* <b>Thuja globosa.</b> 2 to 3 ft. ....	2 50		
* <b>occidentalis.</b> American Arborvitæ. 6 to 7 ft.	2 00	16 00	
7 to 8 ft. ....	3 00	25 00	
* <b>Tsuga canadensis.</b> 3 to 4 ft. ....	2 00	18 00	175 00
4 to 5 ft. ....	3 00	25 00	
* <b>caroliniana.</b> Carolina Hemlock. 3 to 6 ft. ...	..\$3 to	15 00	
<b>Ulmus campestris.</b> 8 to 12 ft. ....	2 00	18 00	
<b>huntingdoni.</b> 8 to 10 ft. ....	2 50	20 00	
<b>Vaccinium pallidum.</b> 1 to 1½ ft. ....	40	3 00	
<b>Viburnum acerifolium.</b> All the Viburnums			
are excellent for screen and border planting			
and in shady places. 1 to 1½ ft. ....	30	2 50	
<b>alnifolium.</b> 2 to 4 ft. ....	75	6 00	
<b>cassinoides.</b> 2 to 3 ft., clumps. ....	50	4 00	
3 to 4 ft., clumps. ....	75	6 00	
4 to 6 ft., clumps. ....	2 00	18 00	
<b>dentatum.</b> 5 to 6 ft., heavy cls. ....	2 50	20 00	
<b>dilatatum.</b> 1½ to 2 ft. ....	60	5 00	
<b>molle.</b> 1½ to 2 ft. ....	35	3 00	25 00
<b>opulus.</b> 2 to 3 ft. ....	50	4 00	
<b>opulus nana.</b> 6 to 12 in. ....	50	4 00	
<b>oxycoccus.</b> 1½ to 2 ft. ....	30	2 50	
<b>prunifolium.</b> 1 to 3 ft. ....	60	5 00	
<b>tomentosa.</b> 2 to 3 ft. ....	50	4 00	35 00
3 to 4 ft. ....	75	6 00	50 00
<b>Vitis concord.</b> 6 yr. ....	60	5 00	45 00
<b>Weigelia, Eva Rathke.</b> 2 to 3 ft. ....	50	4 00	35 00
<b>Wisteria.</b> In variety. Strong vines. 4 to 6 ft. \$1 to	2 00		
<b>Xanthorrhiza apiifolia.</b> 1 to 1½ ft., str. cls. ....	65	6 00	50 00
* <b>Yucca flaccida.</b> Clumps. ....	50	4 00	

## Hardy Herbaceous Perennials

Any Hardy Herbaceous Perennials desired can be supplied at prices to fit the quality of the stock. It does not pay to use weak plants which can be bought cheap, but rather secure strong established stuff that will produce quick, permanent results. Only a few specialties are given below. See also Highlands Nursery Price List pages 16 to 21.

	Each	10	100
<b>Convallaria majalis.</b> Strong. ....	\$0 15	\$1 00	\$8 00
<b>Galax aphylla.</b> Established clumps. ....	35	2 50	18 00
<b>Lilium canadense.</b> 2nd size. ....	10	60	5 00
1st size. ....	15	1 00	8 00
<b>carolinianum.</b> ....	20	1 50	12 00
<b>grayi.</b> ....	25	1 50	12 50
<b>philadelphicum.</b> ....	20	1 50	8 00
<b>speciosum.</b> ....	25	2 00	12 00
<b>superbum.</b> 1st size. ....	20	1 00	8 00
<b>Pæonies.</b> Strong clumps. ....	60	4 50	40 00
A fine assortment of mixed varieties,			
Strong plants with 2 to 3 eyes. ....	20	1 50	12 00
<b>Phlox subulata alba.</b> Clumps. ....	30	2 50	20 00
<b>Stenanthium robustum.</b> 2nd size. ....	20	1 50	12 50
1st size. ....	40	3 00	26 00

## Landscape Department

Visits are made for consultation and advice, to make surveys, designs and planting plans. Entire construction, planting and carrying out of Landscape work of all kinds undertaken, and charges will be found reasonably consistent with good workmanship and permanent results.

**The Wild Garden.** The basis of all the best landscape work of a permanent nature must be Native Plants and particularly where naturalistic effects are desired. If this fact is ignored, tame and fleeting results will follow. I make a specialty of **wild gardening** and my long experience is here of greatest value. Every garden or estate has its own peculiar problems and a discussion of details may prove helpful in unexpected ways. Address,

**HARLAN P. KELSEY**

(Landscape Department)

Empire Theatre Building

Salem Mass.

EVERGREENS ARE MARKED WITH A STAR (\*)